

The background of the image features a dark, textured surface, possibly a stage floor or a backdrop. On the left, the body of a dark wood electric guitar is visible, showing its pickups and control knobs. In the upper right, a black rectangular object, likely a piece of audio equipment, has the "Quantum Audio Designs" logo printed on it. The logo consists of a stylized red and white "Q" followed by the word "Quantum" in a red, italicized font, and "AUDIO DESIGNS" in a smaller, white, sans-serif font below it. A large, professional studio microphone with a dark, cylindrical body and a silver grille is positioned on the right side of the image. Several audio cables with different colored connectors (blue, red, white, and black) are laid out on the surface in front of the microphone.

**Quantum**  
AUDIO DESIGNS

# Product Guide



# **Table Of Contents**

***Introduction To Our Product Line  
(Page 2)***

***Guitar/ Instrument Cables- SI, HSI, SQI, HSQI,  
HSQI G, Quiet Plug, BI, EPI, CEPI  
(Pages 3 to 7)***

***Instrument Cables (Cloth-Jacketed Cables)- CI, CSQI  
(Pages 8 to 9)***

***Patch Cables- UP and BP (Page 10)***

***MIDI Cables- QM (Page 11)***

***MIC Cables- LTHM, LM, SQLM, HM2, HM3 and Vintage Mic Cables  
(Pages 12 to 15)***

***Cloth-Jacketed Cables- CLM, CHM (Pages 16 to 17)***

***Specialty “Y” Cables- SY (Page 18)***

***Speaker Cables- SC 12, SC 14, SC 16, and SC18 Series Cables, NSSC8 Series,  
NSSC4 Series and Multichannel Speaker Cables  
(Pages 19 to 22)***

***Audio Snakes and Multi-Track Cables- Performer Series Audio Snakes,  
Performer Series Multi-Tracks Series, Gigline Snakes and Gigline Power Snakes  
(Pages 23 to 28)***

***Direct Boxes- Match-Maker Direct Box (Page 29)***

***SAB Series Speakon Adapter Boxes- SAB-202, SAB-Q02, SAB-404  
and SAB-402Q (Page 30)***

***Floor Pocket Boxes- MFBOX, MFBOX5 and MFBOX8 (Page 31)***

***Stainless Steel Wall Plates- Custom and Measured Ones  
(Page 32)***

***Installation Grade- Bulk Wire, Bulk Quantum Cable, Bulk Connectors  
and Audio Adapters  
(Page 33 to 39)***

***Warranty Policies  
(Page 40)***

## ***AN INTRODUCTION TO OUR PRODUCT LINE***

Quantum Audio Designs interconnects are designed to provide the highest fidelity, most reliable cable interfaces, at truly affordable price points, available within our market today. Our overall design strategy has been to develop cable products that actually provide better fidelity and tonal qualities than the multitude of competitive cable products that offer only mediocre performance at best. We pride ourselves on producing products that we, as musicians, as well as any other discerning musician, would want to use to improve their overall sound quality. Our company's decision to follow this design philosophy has seemed to be the correct path, since, to date, we have yet to meet a musician that told us that they were not interested in products that would improve their overall tonal quality, audio clarity, or prove to be a more reliable product.

To accomplish our goal of producing better sounding products, it has required that higher quality component parts and connectors, higher performance conductor and insulating materials, and often, a greater quantity of those materials, be incorporated into our products. Although this is not the least expensive way to produce audio cable products, it is the only way to assure the performance and reliability levels we demand will be met.

All too often, we hear from both dealers, and end-users alike, that until they had experienced the improvement in sonic quality of our audio cable products, as compared to that of other brands that they have used, they had assumed there was no difference in the performance levels of various cable products. Many of these people had erroneously been told there was really no difference in sound quality between cables and that the best approach to cables was to buy those with the cheapest price. Conversely we have found that, once exposed to audio cable products offering better audio clarity and tonal response, end-users realize the sonic improvements that can be achieved and are more than willing to pay a nominally higher price for this increased performance. These end-users often become the most loyal customers to the dealers that "turned them on" to the fact that there is better performance to be had and that the overall "value" of such products greatly outweigh a slightly higher purchase price.

Since our company's inception, we have felt that the most effective way to promote the long term health of our company is to provide our dealer base with a product line which promotes the development of long term customers for their businesses. We've always felt that the best way to accomplish this is to provide our dealers with exceptional products at truly value oriented price points, that their customer base will purchase, appreciate, and, eventually, demand on a repetitive basis. Although many cable manufacturers consider our "quasi-audiophile" approach to cable design a bit extreme, we have chosen this approach as to guarantee every user of Quantum products our whole-hearted commitment to quality, performance, and more so, the quality of their performance. At Quantum, we feel it is better to design and build exceptional quality and performance into every product, rather than have to apologize for lack of either in any of our products.

### ***QUANTUM AUDIO DESIGNS, INC.***

***Shipping: #1 Quantum Drive  
Benton, MO 63736***

***Mailing: P.O. Box 130  
Benton, MO 63736***

***Phone: 1.573.545.4404***

***Toll Free Phone: 1.888.545.4404***

***Fax: 1.573.545.4411***

***Email: [sales@quantumaudiodesigns.com](mailto:sales@quantumaudiodesigns.com)***



**SI SERIES**

The SI series instrument cables are designed to offer exceptional audio performance, while providing the user with an extremely durable cable. Heavy duty G & H brand ¼" phone plugs are hand soldered to guarantee a perfect connection. The SI series incorporates our Q-2000 series single conductor audio cable. The Q-2000 series wire is designed specifically for use as an instrument cable. The Q-2000 series wire is designed specifically for use as an instrument cable; therefore, great attention was given to assure this cable would be as immune to mechanical handling noise as practically possible. To provide you with the ultimate in audio fidelity, the Q-2000 series cable utilizes finely stranded bare copper wire for the center conductor and overall shield. By utilizing this finely stranded conductor material, both the high frequency audio performance and overall physical flexibility of the cable is improved. A specially formulated center conductor insulation material is incorporated to reduce nominal capacitance, improving audio fidelity. To assure that your audio signal will remain intact, the Q-2000 cable incorporates a served shield with 75% overall coverage to provide the necessary protection against outside interference while maintaining excellent flexibility.

**MODEL LENGTH**

<b>SI-1/3 RR</b>	<b>4 IN.</b>
<b>SI-1/2 RR</b>	<b>6 IN.</b>
<b>SI-1</b>	<b>1 FT.</b>
<b>SI-3</b>	<b>3 FT.</b>
<b>SI-6</b>	<b>6 FT.</b>
<b>SI-8</b>	<b>8 FT.</b>
<b>SI-10</b>	<b>10 FT.</b>
<b>SI-12</b>	<b>12 FT.</b>
<b>SI-15</b>	<b>15 FT.</b>
<b>SI-18</b>	<b>18 FT.</b>
<b>SI-20</b>	<b>20 FT.</b>
<b>SI-25</b>	<b>25 FT.</b>
<b>SI-30</b>	<b>30 FT.</b>

**HSI SERIES**

The Quantum HSI, Heat Shrink Instrument, series cable utilizes our Q-2000 series audio cable with G & H brand ¼" phone plug terminations. During the manufacturing process, hot melt epoxy compound is injected into the connector cavity to provide an insulator against the possibility of a short developing inside the connector, as well as provide strain relieve on the actual solder joints. After final assembly of the cable is complete, a section of heat shrinkable tubing is placed over the connector barrel and shrunk into place to provide additional strain relief. Custom imprinting of the heat shrink tubing with dealer logo or name, and telephone number is available upon request with orders of 24 or more HSI series cables.

**MODEL LENGTH**

<b>HSI-1/3 RR</b>	<b>4 IN.</b>
<b>HSI-1/2 RR</b>	<b>6 IN.</b>
<b>HSI-1</b>	<b>1 FT.</b>
<b>HSI-3</b>	<b>3 FT.</b>
<b>HSI-6</b>	<b>6 FT.</b>
<b>HSI-8</b>	<b>8 FT.</b>
<b>HSI-10</b>	<b>10 FT.</b>
<b>HSI-12</b>	<b>12 FT.</b>
<b>HSI-18</b>	<b>18 FT.</b>
<b>HSI-20</b>	<b>20 FT.</b>
<b>HSI-25</b>	<b>25 FT.</b>
<b>HSI-30</b>	<b>30 FT.</b>



## SQI SERIES

Our Studio Quality Instrument (SQI), series cables are designed with the truly performance conscience musician in mind. Oxygen-free high conductivity copper is utilized on both the center conductor and shield to provide the best audio path possible. Individual copper strands that make up the center conductor and shield are extremely small in diameter in an effort to increase the high-end frequency response, improving overall fidelity. The 95% coverage serve shield assures you that the audio signal will remain intact in even the most adverse conditions. The outer jacketing of the cable is a special formulation of PVC compounds which provide exceptional flexibility and durability as well as protection against the mechanical handling noise often encountered in many of our competitor's cables. All SQI series cables are hand-soldered with heavy-duty G & H brand connectors to provide a quality connection that will perform flawlessly for years. Overall tonal balance of SQI series cables is exceptional, with solidly defined bass response and crystal clear highs. The SQI cables seem to excel when used in combination with single coil pickup designs or piezo electric transducers.

***SQI series cables are available in a variety of colors including black, red, blue, green, yellow, violet, gray and white. Custom SQI series cables with Amphenol, Switchcraft or Neutrik brand connectors are also available upon request.***



MODEL	LENGTH
SQI-1/3 RR	4 IN.
SQI-1/2 RR	6 IN.
SQI-1	1 FT.
SQI-3	3 FT.
SQI-6	6 FT.
SQI-8	8 FT.
SQI-10	10 FT.
SQI-12	12 FT.
SQI-15	15 FT.
SQI-18	18 FT.
SQI-20	20 FT.
SQI-25	25 FT.
SQI-30	30 FT.

## HSQI SERIES

Our HSQI, Heat Shrink Studio Quality Instrument, series cables are designed to provide the performing musician with a cable that is both extremely durable as well as offering exceptional audio fidelity. Utilizing the same Q-2100 series audio cable with G & H brand ¼" phone plug terminations that is used in the SQI series cables, the HSQI series cables are subjected to additional manufacturing procedures to further improve performance. During the manufacturing process, hot melt epoxy compound is injected into the connector cavity to provide an insulator against the possibility of a short developing inside the connector as well as provide strain relief on the actual solder joints. After final assembly of the cable is complete, a section of heat shrinkable tubing is placed over the connector barrel and shrunk into place to provide additional strain relief. Custom imprinting of the heat shrink tubing with dealer logo or name and telephone number is available upon request with orders of 24 or more HSQI series cables.



MODEL	LENGTH
HSQI-1/3 RR	4 IN.
HSQI-1/2 RR	6 IN.
HSQI-1	1 FT.
HSQI-3	3 FT.
HSQI-6	6 FT.
HSQI-8	8 FT.
HSQI-10	10 FT.
HSQI-12	12 FT.
HSQI-15	15 FT.
HSQI-18	18 FT.
HSQI-20	20 FT.
HSQI-25	25 FT.
HSQI-30	30 FT.

## HSQI G CABLES

The Quantum HSQI G Series instrument cables incorporate our high performance Q-2100 Oxygen- Free instrument cable and outer heat shrink process with gold-plated G & H brand ¼" phone plugs. This combination of component materials provides exceptional fidelity audio fidelity and overall durability. While the 20 gauge conductor and 95% shield coverage of the Q-2100 cable provide truly high fidelity performance, the gold-plated phone plugs help increase conductivity for the audio signal. As with our other heat shrink cable assemblies, custom imprints are available on orders of 24 or more HSQI G cables. All HSQI G series cables are available in a variety of colors including black, red, blue, green, yellow, violet, gray, and white.

### MODEL LENGTH

HSQI-1G	1 FT.
HSQI-2G	2 FT.
HSQI-3G	3 FT.
HSQI-6G	6 FT.
HSQI-8G	8 FT.
HSQI-10G	10 FT.
HSQI-12G	12 FT.
HSQI-15G	15 FT.
HSQI-18G	18 FT.
HSQI-20G	20 FT.
HSQI-25G	25 FT.
HSQI-30G	30 FT.



## QUIET PLUG CABLES (SQI Q AND HSQI Q)

To accommodate guitarists that change instruments during a performance and wish to avoid the "pop and hum" often encountered during this operation, we offer the option of the G & H Quiet Plug on our SQI and HSQI series instrument cables. Through the incorporation of a uniquely designed, spring-loaded shunt, this connector allows the user to plug into and unplug from instruments while maintaining a virtually noise-free environment. All SQI Q and HSQI Q series cables are available in a variety of colors including black, red, blue, green, yellow, violet, gray and white.

### MODEL LENGTH

SQI-10Q	10 FT.
SQI-12Q	12 FT.
SQI-15Q	15 FT.
SQI-18Q	18 FT.
SQI-20Q	20 FT.
SQI-25Q	25 FT.
SQI-30Q	30 FT.

### MODEL LENGTH

HSQI-10Q	10 FT.
HSQI-12Q	12 FT.
HSQI-15Q	15 FT.
HSQI-18Q	18 FT.
HSQI-20Q	20 FT.
HSQI-25Q	25 FT.
HSQI-30Q	30 FT.





## BASS INSTRUMENT SERIES

The BI Series Instrument cables were specifically designed with the bass guitarist in mind. The BI series cables utilize our Q-2200 series instrument cable which incorporates an oxygen-free 18-gauge center conductor and a 95% coverage served shield as to provide a more stable platform for lower frequency information transmission. The BI cables incorporate nickel-plated G & H brand ¼" phone plugs to provide one of the most reliable connections possible. The BI cable's overall tonal response is tailored to provide a tighter low frequency response, a more sedate upper midrange and slightly rolled off high frequency range. The BI cable's overall tonal response tends to make this cable a viable choice for bassists who prefer a rounder sounding response, and guitarists who strive for a more jazz oriented, or vintage 50's / early 60's tone. Options for the BI series cables include right angle phone plugs (suffix "R") and/ or outer heat shrink (use "HBI" for series) for an extra fee.

### MODEL LENGTH

BI-10	10 FT.
BI-12	12 FT.
BI-15	15 FT.
BI-18	18 FT.
BI-20	20 FT.
BI-25	25 FT.
BI-30	30 FT.

### MODEL LENGTH

HBI-10	10 FT.
HBI-12	12 FT.
HBI-15	15 FT.
HBI-18	18 FT.
HBI-20	20 FT.
HBI-25	25 FT.
HBI-30	30 FT.



instrument cables

## EPI SERIES

The Quantum EPI, Enhanced Performance Instrument, series cables are designed to offer the utmost in audio fidelity while being durable enough to meet the rigors of touring applications. Due to the cable's extremely tight & well defined low frequency characteristics, as well as it's precise high end detail, most listeners refer to this cable as "the most in your face sounding cable" they've ever experienced. Due to it's "full bodied" tonal qualities, the EPI series cables tend to be a favorite with guitarists using humbucker pickup designs, as well as bass guitarists that lean toward more percussive playing styles. All EPI series cables utilize our Q-2300 series oxygen-free, high definition audio cable. This cable design incorporates a combination of materials and construction specifications that produce possibly the finest audio performance levels you've ever experienced! The EPI utilizes an extremely large gauge center conductor, which is constructed of finely stranded oxygen-free copper. An extremely low capacitance insulation material is used as to produce incredible audio clarity and frequency response. The incorporation a 95% coverage braided shield provides maximum strength which permits this cable to handle the physical abuse encountered in professional sound reinforcement applications. To ensure the best signal path possible, the EPI series cables are terminated with gold-plated G & H brand 1/4" phone plugs. For added durability, EPI series cables incorporate our heat shrink process in which the connector cavity is filled with hot melt epoxy and heat shrinkable tubing is applied over the connector barrels. Due to their robust construction and braided shielding, the EPI series cables tend to be least flexible of our many instrument cables. Therefore, we recommend the EPI series cables for pedal board to amplifier interfaces, studio applications, or instances where the user is willing to accept the added stiffness in order to achieve maximum fidelity and tonal response. The EPI series instrument cables are also available with right angle gold-plated G & H connectors upon request for an additional fee.

### MODEL LENGTH

<b>EPI-1/3 RR</b>	<b>4 IN.</b>
<b>EPI-1/2 RR</b>	<b>6 IN.</b>
<b>EPI-1</b>	<b>1 FT.</b>
<b>EPI-3</b>	<b>3 FT.</b>
<b>EPI-6</b>	<b>6 FT.</b>
<b>EPI-8</b>	<b>8 FT.</b>
<b>EPI-10</b>	<b>10 FT.</b>
<b>EPI-12</b>	<b>12 FT.</b>
<b>EPI-15</b>	<b>15 FT.</b>
<b>EPI-18</b>	<b>18 FT.</b>
<b>EPI-20</b>	<b>20 FT.</b>
<b>EPI-25</b>	<b>25 FT.</b>
<b>EPI-30</b>	<b>30 FT.</b>



### MODEL LENGTH

<b>CEPI-10</b>	<b>10 FT.</b>
<b>CEPI-12</b>	<b>12 FT.</b>
<b>CEPI-15</b>	<b>15 FT.</b>
<b>CEPI-18</b>	<b>18 FT.</b>
<b>CEPI-20</b>	<b>20 FT.</b>
<b>CEPI-25</b>	<b>25 FT.</b>
<b>CEPI-30</b>	<b>30 FT.</b>

*Shown in Freon Neon, also available in Black Max (Black Ice pattern)*

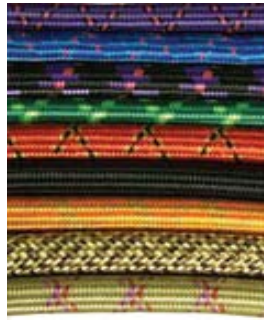


## CI SERIES

The new CI series cloth jacketed instrument cables offer outstanding audio performance and esthetics at exceptional price points. All CI series cables incorporate a heavy-duty 20-gauge center conductor with hand-soldered G & H brand connectors to provide the highest levels of reliability possible. The tightly braided nylon outer jacket is currently available in ten different eye-catching colors / patterns.

Standard configuration connectors for the CI series cables are nickel plated barrels and plug fingers, although we also offer other connector options which include right angle connectors, black connector barrels with nickel or gold plated plugs, or gold plated plug fingers. As to maximize the cable's visual appeal, we have developed a set of recommended connector configurations which we deem to be the "Standard configuration" for each of the different cloth patterns. A listing of the recommended connector configurations and the pattern codes, used to specify the desired jacket pattern when ordering, are listed below.

PATTERN	CODE	MODEL #
<i>Voluptuous Violet</i>	<i>.VV</i>	<i>CI-10.VV</i>
<i>Blueberry Thrill</i>	<i>.BT</i>	<i>CI-10.BT</i>
<i>Quantum Quake</i>	<i>.QQ</i>	<i>CI-10.QQ</i>
<i>Mean Green</i>	<i>.MG</i>	<i>CI-10.MG</i>
<i>Acid Redhead</i>	<i>.AR</i>	<i>CI-10.AR</i>
<i>Black Jack</i>	<i>.KJ</i>	<i>CI-10.KJ</i>
<i>Orange Krush</i>	<i>.OK</i>	<i>CI-10.OK</i>
<i>Classic Tweed</i>	<i>.CT</i>	<i>CI-10.CT</i>
<i>Gold Rush</i>	<i>.GR</i>	<i>CI-10.GR</i>



### Connector options for CI series cables.

*Right angle plug with nickel barrel, add R after cable length.*  
*Gold plated right angle plug (nickel barrel), add GR after cable length.*  
*Gold plated straight plug (nickel barrel), add G after cable length.*  
*Black barrel with nickel plug, add K after cable length.*  
*Gold plated plug with black barrel, add KG after cable length.*  
*Quiet plug (nickel barrel), add Q after cable length.*  
*Gold plated quiet plug (nickel barrel), add GQ after cable length.*  
*Right angle quiet plug (nickel barrel), add QR after cable length.*  
*Outer heat shrink over connector barrel (although not recommended for some patterns due to an absence of coordinating heat shrink colors), add H prefix to series.*  
 Additional charge applies.



## CSQI SERIES

The new CSQI series of oxygen-free cloth jacketed instrument cables offer the utmost in reliability as well as phenomenal audio clarity for those players with a discerning ear. The CSQI series cables incorporate our oxygen-free, low capacitance Q-2100 cable and hand-soldered G & H brand connectors to provide a cable that sets a new standard for cloth jacketed instrument cables. Available in ten different colors / patterns.

As with all of our Quantum instrument cables, a multitude of connector options are offered which include nickel or black connector barrels with nickel, or gold plated plugs. As to maximize the cable's visual appeal, we have developed a set of recommended connector configurations which we deem to be the "Standard configuration" for each of the different cloth patterns. A listing of the recommended connector configurations and the pattern codes, used to specify the desired pattern when ordering, are listed below.

PATTERN	CODE	MODEL #
<i>Pink Cadillac</i>	<i>.PC</i>	<i>CSQI-10.PC</i>
<i>Black Ice</i>	<i>.BI</i>	<i>CSQI-10.BI</i>
<i>Terrific Teal</i>	<i>.TT</i>	<i>CSQI-10.TT</i>
<i>Classic Tweed</i>	<i>.CT</i>	<i>CSQI-10.CT</i>
<i>Lime Light</i>	<i>.LL</i>	<i>CSQI-10.LL</i>
<i>Blue Magoo</i>	<i>.BM</i>	<i>CSQI-10.BM</i>
<i>Blue By-You</i>	<i>.BB</i>	<i>CSQI-10.BB</i>
<i>Greyful Red</i>	<i>.GR</i>	<i>CSQI-10.GR</i>
<i>Burgundy Whine</i>	<i>.BW</i>	<i>CSQI-10.BW</i>
<i>Neon Burst</i>	<i>.NB</i>	<i>CSQI-10.NB</i>



*Individual color names listed in order above*

*Right angle plug with nickel barrel, add R after cable length.*  
*Gold plated right angle plug (nickel barrel), add GR after cable length.*  
*Gold plated straight plug (nickel barrel), add G after cable length.*  
*Black barrel with nickel plug, add K after cable length.*  
*Gold plated plug with black barrel, add KG after cable length.*  
*Quiet plug (nickel barrel), add Q after cable length.*  
*Gold plated quiet plug (nickel barrel), add GQ after cable length.*  
*Right angle quiet plug (nickel barrel), add QR after cable length.*  
*Outer heat shrink over connector barrel (although not recommended for some patterns due to an absence of coordinating heat shrink colors), add H prefix to series.*  
*Additional charge applies.*



## PATCH CABLES UP SERIES

The Up series of Unbalanced Patch cables is designed to provide a quality patch cable for any situation requiring RCA phono plugs. Available in either RCA to RCA or RCA to 1/4" configurations, the UP series cables can meet your specific requirements. The UP series assemblies utilize our Q-2000 series single conductor cable with high quality metal barreled connectors to assure you of a quality connection for years to come. For an additional fee, a layer of heat shrinkable tubing can be added over the outside of the cable's connectors to provide additional strain relief and easy identification of the cable should you choose to develop a color coding scheme for your particular application. Should you wish to include the outer heat shrink on the cable, simply specify HUP (instead of UP) as the series when ordering.



MODEL	LENGTH
UP-1	1 FT.
UP-2	2 FT.
UP-3	3 FT.
UP-6	6 FT.
UP-8	8 FT.
UP-10	10 FT.
UP-12	12 FT.
UP-15	15 FT.
UP-20	20 FT.
UP-25	25 FT.
UP-30	30 FT.

## BP SERIES

The Quantum BP series of Balanced Patch Series are designed to provide a truly high quality cable interface between audio equipment with balanced 1/4" inputs. The BP series cables utilize our oxygen-free Q-3100 wire and heavy duty G & H brand TRS 1/4" phone plugs to provide you with the best performance and reliability possible. Standard configuration for the BP series cables are 1/4" TRS phone plugs at each end. For applications requiring interfaces between equipment with 1/4" TRS connections and those with XLR connections, 3 pin XLR males or females are available upon request. For those applications, please add either F (for XLR female) or X (for XLR male) suffix to the model number. For example: BP-25F (1/4" TRS plug to female XLR) or BP-25X (1/4" TRS plug to male XLR). Also available upon request, gold plated connectors on cable (add G suffix to model number) and outer heat shrink over 1/4" TRS connector barrels (add H prefix to model number). Consult your Quantum representative for further details and pricing.



MODEL	LENGTH
BP-1	1 FT.
BP-2	2 FT.
BP-3	3 FT.
BP-6	6 FT.
BP-8	8 FT.
BP-10	10 FT.
BP-12	12 FT.
BP-15	15 FT.
BP-20	20 FT.
BP-25	25 FT.
BP-30	30 FT.
BP-50	50 FT.

## MIDI CABLES

### QM SERIES

The Quantum QM series MIDI cables are designed to provide an extremely durable 5 pin active cable assembly for any MIDI patching application. The QM series cables utilize our Q-3200M series four-conductor oxygen-free cable. This cable offers exceptional performance when used in applications due to high conductivity oxygen-free copper and the extremely low overall capacitance achieved through the incorporation of special conductor insulation materials. The 95% coverage braided shield provides the necessary resistance to the physical abuse as well as outside RF interference that cables encounter in professional performance environments. Metal shell din connectors are solder terminated to provide the best performance possible.

MODEL	LENGTH
QM-1	1 FT.
QM-2	2 FT.
QM-3	3 FT.
QM-5	5 FT.
QM-10	10 FT.
QM-15	15 FT.
QM-10	10 FT.
QM-20	20 FT.
QM-25	25 FT.
QM-30	30 FT.
QM-25	25 FT.
QM-30	30 FT.



*Custom lengths available upon request.*

## IMPEDANCE TRANSFORMER XF CABLE

### LTHM SERIES

The LTHM series microphone cables are designed to allow low impedance microphones to be used with audio equipment having high impedance inputs. To provide this function, the LTHM cables incorporate the Neutrik brand NP2C-T10AA transformer phone plug which converts low impedance "balanced line" microphone level signal into a high impedance, "unbalanced line" signal. Amphenol brand female XLR connectors with nickel finish are utilized to provide the necessary connection for the microphone. The LTHM series cables incorporate our Q-3100 series oxygen-free wire as to provide exceptional audio fidelity.



MODEL	LENGTH
LTHM-1	1 FT.
LTHM-2	2 FT.
LTHM-3	3 FT.
LTHM-6	6 FT.
LTHM-8	8 FT.
LTHM-10	10 FT.
LTHM-15	15 FT.
LTHM-20	20 FT.
LTHM-25	25 FT.
LTHM-30	30 FT.
LTHM-50	50 FT.





## LOW IMPEDANCE MIC CABLES

### LM SERIES

The Quantum LM series Low Impedance microphone cables are designed to provide an extremely reliable, noise-free, balanced line audio cable at a very affordable price. No where else on the market today can you find a better sounding microphone cable at such a reasonable price point. Utilizing our Q-3100 series balanced line / mic cable, the LM series cable provide audio clarity and overall performance that permit it to be utilized with even the finest of microphones on the market today. Finely stranded, oxygen-free high conductivity copper is utilized on the individual conductors as to promote audio transmission capabilities and to minimize unwanted distortion. Conductor insulators are formulated to minimize cable capacitance in an effort to preserve the high end frequency response and overall audio clarity. A served bare copper shield with 95% overall coverage provides exceptional protection for the audio signal against outside interference. LM series cables utilize the heavy duty, hand soldered, Amphenol brand XLR connectors with the patented "Jaws" strain relief system which provides exceptional resistance against breakage to the cable at the internal solder joints in the event of an unexpected jerk to the cable when in use.

Standard LM series cables utilize nickel finish XLR connectors but are also available with black matte finish connectors for an additional charge. The LM series mic are available in a variety of colors including black, red, blue, green, yellow, violet, gray and white.

LM series microphone cables are also available with optional on/off switch female XLR connectors from Neutrik. To specify on/off switch, please use LMS series designation (instead of LM). For example: LMS-25. Additional charge for on/off switch will apply. Custom lengths and configurations, which utilize connectors from Switchcraft and Neutrik are also available upon request.

#### MODEL LENGTH

LM-1	1 FT.
LM-2	2 FT.
LM-3	3 FT.
LM-6	6 FT.
LM-8	8 FT.
LM-10	10 FT.
LM-15	15 FT.
LM-20	20 FT.
LM-25	25 FT.
LM-30	30 FT.
LM-50	50 FT.
LM-75	75 FT.
LM-100	100 FT.

#### LMS SERIES

##### MODEL LENGTH

LMS-10	10 FT.
LMS-15	15 FT.
LMS-20	20 FT.
LMS-25	25 FT.
LMS-30	30 FT.
LMS-50	50 FT.



*Gray, White, Red, Blue,  
Violet, Green and  
Yellow Cables*





## SQLM SERIES

The Quantum SQLM, Studio Quality Low impedance Mic, cable series are designed with the professional user in mind. The SQLM series combines audio performance as well as the durability to make this cable ideal for both recording studio environments as well as live sound touring applications. The SQLM series utilize our Q-3200 cable, which features a four conductor starquad design of the inner conductors. Through the incorporation of this starquad design, we can achieve a dramatic improvement in noise reduction capabilities of the electronic equipment being used with this starquad cable. Each of the four individual conductors are composed of an extremely fine gauge of oxygen-free high conductivity copper stranding to provide you with the finest fidelity possible. To help preserve the quality of the audio signal, conductor insulators are formulated from special compounds, which minimize cable capacitance. This insulation material produces extremely constant electrical values with capacitance measurements that are typically 10% to 25% lower than many other four conductor designs currently offered by other manufacturers. By lowering the overall capacitance of the cable, the high range frequency response of the audio signal is improved. To minimize the opportunity for any "tribo-electric noise," the inner conductors are secured in their proper locations through the application of a tightly woven 95% braid shield. This high percentage of shield coverage not only assures you that the audio signal will remain unaffected in the most adverse of conditions, but also provides exceptional physical strength. To provide the necessary resistance to physical damage to the cable and prevent any migration of the shield or movement of the shield when the cable is moved, a thick matte outer jacket is pressure extruded over the braided shield. The SQLM series cables utilize the heavy duty, hand soldered, Amphenol brand XLR connectors with the patented "Jaws" strain relief system and machined contacts. The SQLM series mic are available in a variety of colors including black, red, blue, green, yellow, violet, gray and white.

All SQLM series cables are available in various custom configurations including connectors with black matte finish, on/off switches, and right angle female XLR connectors.

Female XLR with on/off switch = SQLMS- + length. For example: SQLMS-25.

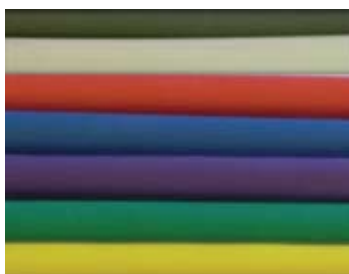
Black matte finish XLRs, add K suffix. For example, SQLM-25K.

Black matte finish XLRs with gold contacts, add KG suffix. For example: SQLM-25KG.

Cables requiring right angle XLR female, please add R suffix. For example: SQLM-25R.

### MODEL LENGTH

<b>SQLM-1</b>	<b>1 FT.</b>
<b>SQLM-2</b>	<b>2 FT.</b>
<b>SQLM-3</b>	<b>3 FT.</b>
<b>SQLM-6</b>	<b>6 FT.</b>
<b>SQLM-8</b>	<b>8 FT.</b>
<b>SQLM-10</b>	<b>10 FT.</b>
<b>SQLM-15</b>	<b>15 FT.</b>
<b>SQLM-20</b>	<b>20 FT.</b>
<b>SQLM-25</b>	<b>25 FT.</b>
<b>SQLM-30</b>	<b>30 FT.</b>
<b>SQLM-50</b>	<b>50 FT.</b>
<b>SQLM-75</b>	<b>75 FT.</b>
<b>SQLM-100</b>	<b>100 FT.</b>



*Gray, White,  
Red,  
Blue, Violet,  
Green,  
and Yellow  
Cables*



mic  
phone  
cables



## HM3 and HM2 SERIES

The Quantum HM3, High impedance Microphone cables are designed for use with high impedance microphones requiring 3 pin XLR connections at the microphone. Standard wiring configurations are pin 3 hot (tip) and pins 1 and 2 negative (tied to sleeve), the wiring scheme for the majority of high impedance mics from companies such as Shure Brothers. All Quantum HM series cables utilize our Q-2000 single conductor audio cable and Amphenol XLR and G & H ¼" connectors. The model number is formed by HM3-+ length. For example: HM3-25.

The Quantum HM2, series High impedance Microphone cables are designed for use with high impedance microphones requiring 3 pin XLR connections at the microphone. Standard wiring configurations are pin 2 hot (tip) and pins 1 and 3 negative (tied to sleeve), the wiring scheme for the majority of high impedance mics from companies such as Electro Voice. All Quantum HM series cables utilize our Q-2000 single conductor audio cable and Amphenol XLR and G & H ¼" connectors. The model number is formed by HM2- + length. For example: HM2-25.



*Custom Configuration  
microphone cables  
available upon  
request.*



### MODEL LENGTH

HM3-3	3 FT.
HM3-6	6 FT.
HM3-10	10 FT.
HM3-12	12 FT.
HM3-15	15 FT.
HM3-20	20 FT.
HM3-25	25 FT.
HM3-30	30 FT.

### MODEL LENGTH

HM2-3	3 FT.
HM2-6	6 FT.
HM2-10	10 FT.
HM2-12	12 FT.
HM2-15	15 FT.
HM2-20	20 FT.
HM2-25	25 FT.
HM2-30	30 FT.



## “VINTAGE” MIC CABLES

We offer custom configurations of microphone cables for applications with an assortment of the most common of the older “vintage” microphones. One of the more common “vintage” HMF series mic cables utilizes the 2501F Switchcraft brand “screw on” or “bottlecap” type connector that terminates on the opposite end to a ¼” phone plug. We also offer the W3M and W4M series vintage mic cables that utilize what we now refer to as the Wire Pro connectors. These connectors are similar in appearance to a standard XLR connector but has a locking ring at the top of the connector that screws on to the mating connector on the microphone to provide a means for locking the two connections together. The W3M is a 3-pin connector and the W4M is a 4-pin connector. Since both of these connectors were used for high impedance and low impedance applications, each can be wired to meet your specific needs. Please contact your Quantum sales representative for more information concerning the wiring necessary for your particular microphone’s requirements.

MODEL	CONNECTORS	LENGTH
<b>HMF-10</b>	<b>“Screw on F” Connectors to ¼” phone plug</b>	<b>10 FT.</b>
<b>HMF-15</b>	<b>“Screw on F” Connectors to ¼” phone plug</b>	<b>15 FT.</b>
<b>HMF-20</b>	<b>“Screw on F” Connectors to ¼” phone plug</b>	<b>20 FT.</b>
<b>HMF-25</b>	<b>“Screw on F” Connectors to ¼” phone plug</b>	<b>25 FT.</b>

<b>HM-10W4M</b>	<b>4 pin wire pro. Connects to ¼” phone plug</b>	<b>10 FT.</b>
<b>HM-15WFM</b>	<b>4 pin wire pro. Connects to ¼” phone plug</b>	<b>15 FT.</b>
<b>HM-20WFM</b>	<b>4 pin wire pro. Connects to ¼” phone plug</b>	<b>20 FT.</b>
<b>HM-25WFM</b>	<b>4 pin wire pro. Connects to ¼” phone plug</b>	<b>25 FT.</b>

<b>LM-10W3M</b>	<b>3 pin wire pro. Connects to XLR M</b>	<b>10 FT.</b>
<b>LM-15W3M</b>	<b>3 pin wire pro. Connects to XLR M</b>	<b>15 FT.</b>
<b>LM-20W3M</b>	<b>3 pin wire pro. Connects to XLR M</b>	<b>20 FT.</b>
<b>LM-25W3M</b>	<b>3 pin wire pro. Connects to XLR M</b>	<b>25 FT.</b>

<b>LM-10W4M</b>	<b>4 pin wire pro. Connects to XLR M</b>	<b>10 FT.</b>
<b>LM-15W4M</b>	<b>4 pin wire pro. Connects to XLR M</b>	<b>15 FT.</b>
<b>LM-20W4M</b>	<b>4 pin wire pro. Connects to XLR M</b>	<b>20 FT.</b>
<b>LM-25W4M</b>	<b>4 pin wire pro. Connects to XLR M</b>	<b>25 FT.</b>

*\*Total number of contacts (3 or 4 pin)*



*W3M Cable*

*W4M Cable*

*HMF Cable  
“Screw on F”*





## CLM SERIES

The new CLM series of oxygen-free cloth jacketed instrument cables offer superb audio clarity as well as exceptional reliability. The CLM series cables incorporate our oxygen-free, low capacitance Q-3100 cable and hand-soldered Amphenol brand connectors to provide a cable that sets a new standard for cloth jacketed microphone cables. Available in five different colors and/or patterns including *Black Ice*, *Classic Tweed*, *Terrific Teal*, *Burgundy Whine*, and *Blue By-you*.

The visual appearance of these cables will appeal to even the most discerning eye. As with all of our Quantum cloth jacketed cables, we have developed a set of recommended connector configurations which we deem to be the "standard configuration" for each of the different cloth patterns to further enhance the cable's visual appeal.

<i>PATTERN</i>	<i>CODE</i>	<i>CONNECTORS</i>	<i>MODEL #</i>
<i>Black Ice</i>	<i>.KI</i>	<i>Black barrel</i>	<i>CLM-20K.KI</i>
<i>Classic Tweed</i>	<i>.CT</i>	<i>Nickel barrel</i>	<i>CLM-20.CT</i>
<i>Terrific Teal</i>	<i>.TT</i>	<i>Nickel barrel</i>	<i>CLM-20.TT</i>
<i>Burgundy Whine</i>	<i>.BW</i>	<i>Nickel barrel</i>	<i>CLM-20.BW</i>
<i>Blue By-You</i>	<i>.BB</i>	<i>Black barrel</i>	<i>CLM-20B.BB</i>

*Colors shown  
above*





## CHM SERIES

The new CHM series of oxygen-free cloth jacketed Hi impedance microphone cables offer excellent audio clarity as well as exceptional reliability. Depending on the cloth pattern chosen, the CLM series cables incorporate either our standard CI series wire or our oxygen-free, low capacitance Q-2000 cable. The CSQHM series cables use Q-2100 oxygen-free wire and hand-soldered Amphenol brand XLR connectors and ¼" phone plugs from G & H to provide the most reliable connections possible. The visual appearance of these cables is guaranteed to impress even the musicians with the most discerning tastes. As with all of our Quantum cloth jacketed cables, we have developed a set of recommended connector configurations which we deem to be the "standard configuration" for each of the different cloth patterns to further enhance the cable's visual appeal. *Available in seventeen different colors and/or patterns.*

PATTERN	CODE	MODEL #
<i>Voluptuous Violet</i>	<i>.VV</i>	<i>CHM#-20.VV</i>
<i>Blueberry Thrill</i>	<i>.BT</i>	<i>CHM#-20.BT</i>
<i>Quantum Quake</i>	<i>.QQ</i>	<i>CHM#-20.QQ</i>
<i>Mean Green</i>	<i>.MG</i>	<i>CHM#-20.MG</i>
<i>Acid Redhead</i>	<i>.AR</i>	<i>CHM#-20K.AR</i>
<i>Black Jack</i>	<i>.BJ</i>	<i>CHM#-20.BJ</i>
<i>Orange Krush</i>	<i>.OK</i>	<i>CHM#-20.OK</i>
<i>Classic Tweed</i>	<i>.CT</i>	<i>CHM#-20.CT</i>
<i>Gold Rush</i>	<i>.GR</i>	<i>CHM#-20.GR</i>

PATTERN	CODE	MODEL #
<i>Neon Burst</i>	<i>.NB</i>	<i>CSQHM#-20.NB</i>
<i>Burgundy Whine</i>	<i>.BW</i>	<i>CSQHM#-20.BW</i>
<i>Greyful Red</i>	<i>.GR</i>	<i>CSQHM#-20.GR</i>
<i>Blue By-You</i>	<i>.BB</i>	<i>CSQHM#-20.BB</i>
<i>Lime Light</i>	<i>.LL</i>	<i>CSQHM#-20.LL</i>
<i>Classic Tweed</i>	<i>.CT</i>	<i>CSQHM#-20.CT</i>
<i>Terrific Teal</i>	<i>.TT</i>	<i>CSQHM#-20.TT</i>
<i>Black Ice</i>	<i>.BI</i>	<i>CSQHM#-20.BI</i>
<i>Pink Cadillac</i>	<i>.PC</i>	<i>CSQHM#-20.PC</i>



Colors  
shown  
as  
above.



## SPECIALTY “Y” ADAPTER CABLES SY SERIES CABLES

The Quantum “SY” Specialty Y series cables are designed to address particular interfacing problems often encountered when a single audio signal must be sent to two separate locations. To assure you of a quality product, components chosen for each of the particular models of “SY” cables were selected based on their performance characteristics when utilized for that particular product’s intended use. For an additional fee, all “SY” cables are able to have custom imprinted shrink tubing applied to the wire as to provide the user with a means for easy identification. Due to the many possible combinations of connector configurations, it is necessary to specify all connectors required when ordering. To do this, simply use the “SY-“ prefix, followed by the desired overall cable length, and finally, followed by a three-character code outlining the connectors needed on the Y cable. The connector codes are as follows:

**S= stereo TRS ¼” phone plug**  
**T= stereo TRS ¼” phone jack**  
**P= mono ¼” phone plug**  
**N= mono ¼” phone jack**  
**A= 3.5mm TRS plug**

**X= male XLR**  
**F= female XLR**  
**C= RCA phono plug**  
**D= RCA phono jack**

When applying the above connector codes to the end of the model number, please list the connector codes alphabetically. An example of the proper model number for a specialty Y cable, 3 ft. in. length, with one stereo phone plug to two mono ¼” phone plugs would be: **SY-3PPS**. If your particular application required a 10 ft. long cable with one XLR female to two XLR males, the proper model number would be **SY-10FXX**. Standard lengths for the “SY” series cables are 1 ft., 2 ft., 3 ft., 6 ft., and 10 ft. Other custom lengths are available upon request. Due to limitations of many connectors in regard to their ability to accept maximum diameters of wire, construction techniques for the various Y cables will vary, depending on the construction method we deem provides the greatest amount of structural integrity. Unless specified otherwise, all specialty Y cables are wired pin 2 hot. The following is a listing of our most popular configurations of Y cables. Due to the number of possible configurations, you may need to contact your Quantum sales representative to confirm the specifications that your particular application requires. Please note that all SY series cables are considered specialty cables that are custom fabricated on a case by case basis, therefore, they are considered a custom product and are not returnable for factory restocking or eligible for credit to the ordering dealer’s account.

MODEL	DESCRIPTION
SY-CCN	¼” MONO JACK TO 2) RCA PHONO PLUGS
SY-CCP	¼” MONO PLUG TO 2) RCA PHONO PLUGS
SY-DDP	¼” MONO PLUG TO 2) RCA PHONO JACKS
SY-NNP	¼” MONO PLUG TO 2) ¼” MONO JACKS
SY-NPP	¼” MONO JACK TO 2) ¼” MONO PLUGS
SY-PPP	¼” MONO PLUG TO 2) ¼” MONO PLUGS
SY-CDD	RCA PHONO PLUG TO 2) RCA PHONO JACKS
SY-CCD	RCA PHONO JACK TO 2) RCA PHONO PLUGS
SY-CCS	¼” STEREO TRS PLUG TO 2) RCA PHONO PLUGS
SY-DDS	¼” STEREO PLUG TO 2) RCA PHONO JACKS
SY-NNS	¼” STEREO TRS PLUG TO 2) ¼” MONO JACKS
SY-PPS	¼” STEREO TRS PLUG TO 2) ¼” MONO PLUGS
SY-STT	¼” STEREO TRS PLUG TO 2) ¼” STEREO TRS JACKS
SY-SXX	¼” STEREO TRS PLUG TO 2) XLR MALES
SY-FXX	XLR FEMALE TO 2) XLR MALES
SY-FFX	XLR MALE TO 2) XLR FEMALES
	<b>CUSTOM CONFIGURATIONS AVAILABLE</b>

*\*Denotes overall length of cable assembly. Standard lengths for Y cables are 1, 2, 3, 6, or 10 ft. Fanout spread of Y section of cable is generally 1 ft. on cable lengths of 1, 2, & 3 ft. assemblies and 2 ft. fanout length on 6 & 10 ft. long assemblies. If greater fanout spread is required, consult your Quantum sales representative as to determine the construction techniques that will best suit your particular requirements.*

adapter cables

## SC SERIES

Our SC series of Speaker Cables offers four different gauges of cable to allow you to choose the most fitted for your particular application. Available gauges range from 18 gauge cable, suitable for lower power applications requiring short runs of cable from amplifier to speaker enclosure, to our heavy duty 12 gauge speaker cable, designed to handle the higher power conditions found in many of today's professional sound reinforcement applications. Although each of the different models of cable can vary slightly in their internal construction, each has been designed to provide the maximum amount of fidelity possible.

Inner conductors in all SC series cables utilize finely stranded, oxygen-free, high conductivity copper to provide the best signal transmission qualities possible. The stranding utilized in the inner conductors of our SC series cable is typically much finer than that used by most of our competitors, with the total number of strands within the conductor generally numbering over twice the amount found in other brands. Although the cost of this type of stranding is considerably greater than that of the stranding found in other brands, it offers multiple benefits to the user. First, by increasing the total number of strands within the conductor, we take advantage of what is known as the "skin effect." The "skin effect" refers to the fact that the higher frequencies of audio signals typically travel on the outside of the strands within the conductors. By, utilizing more strands within the individual conductors, the overall fidelity of the cable is improved. Another very noticeable benefit to the finer stranding is that the mechanical flexibility of the cable is improved.

To take advantage of the more flexible conductor, the jacketing material chosen for the SC series cables is constructed from specially formulated compounds that offer exceptional flexibility while offering the durability required of a professional quality speaker cable.

To assure optimum transmission of the audio signal as well as maximum durability, the SC series cables are terminated with G & H brand phone plugs. All SC series cables are also available with optional MDP plugs should your application require them.

As an option, we also offer all SC series speaker cables with Neutrik brand "Speakon" connectors. Due to SC series speaker cables utilizing two conductor wires, please make certain that your application does not call for two discrete channels of speaker level information (BI-amp applications). If this is the case, please refer to our multi-channel NSSC4 series cables.

*See individual model number and length charts on the next page.*



email at [sales@quantumaudiodesigns.com](mailto:sales@quantumaudiodesigns.com)

1.888.545.4404 fax 1.573.545.4411

# speaker cables



## SC SERIES

### 18 GAUGE CABLES

MODEL	LENGTH
SC18-3	3 FT.
SC18-6	6 FT.
SC18-10	10 FT.
SC18-12	12 FT.
SC18-15	15 FT.
SC18-20	20 FT.
SC18-25	25 FT.
SC18-30	30 FT.
** SC18-50	50 FT.

### 16 GAUGE CABLES

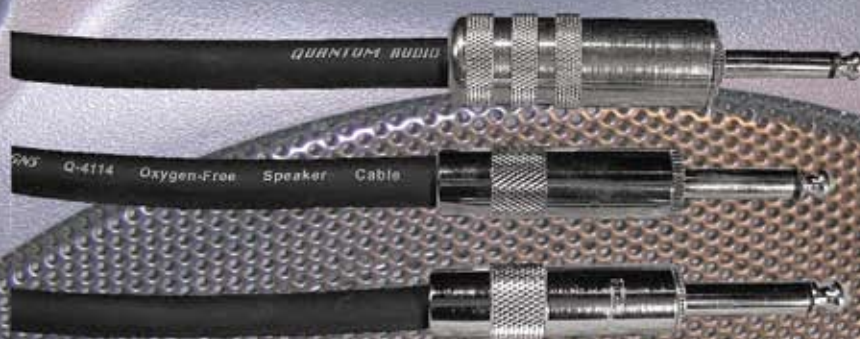
MODEL	LENGTH
SC16-3	3 FT.
SC16-6	6 FT.
SC16-10	10 FT.
SC16-12	12 FT.
SC16-15	15 FT.
SC16-20	20 FT.
SC16-25	25 FT.
SC16-30	30 FT.
SC16-50	50 FT.
** SC16-75	75 FT.
SC16-100	100 FT.

### 14 GAUGE CABLES

MODEL	LENGTH
SC14-3	3 FT.
SC14-6	6 FT.
SC14-10	10 FT.
SC14-12	12 FT.
SC14-15	15 FT.
SC14-20	20 FT.
SC14-25	25 FT.
SC14-30	30 FT.
SC14-50	50 FT.
SC14-75	75 FT.
**SC14-100	100 FT.

### 12 GAUGE CABLES

MODEL	LENGTH
SC12-3	3 FT.
SC12-6	6 FT.
SC12-10	10 FT.
SC12-15	15 FT.
SC12-20	20 FT.
SC12-25	25 FT.
SC12-30	30 FT.
SC12-50	50 FT.
SC12-75	75 FT.
SC12-100	100 FT.



12  
GAUGE

14  
GAUGE

16  
GAUGE

*For MDP plug terminations, please add M suffix to the model number for each MDP plug required. Example: model SC18-25M (MDP on one end) or SC18-25MM (MDP on both ends). For cables with four conductor Neutrik Speakon connectors, please add NS suffix to model number. Example: SC14-50NS. If Speakon connectors are required for both ends of cable, add NSNS suffix. Example: SC14-50NSNS. \*\* added to lengths that are "borderline" of considering a heavier gauge wire.*

**CUSTOM LENGTHS ARE AVAILABLE UPON REQUEST.**



speaker cables



## **MULTI-CHANNEL SPEAKER CABLES**

### **NSSC4 SERIES**

The Quantum NSSC4 Neutrik Speakon Speaker Cable series is designed to accommodate amplifier to speaker and speaker to speaker applications on units utilizing the Neutrik brand four conductor "Speakon" series connectors. The NSSC4 series cables utilize our Q-4400 series multi-conductor speaker cable. The individual conductors are composed of extremely fine strands of oxygen-free high conductivity copper to provide the best fidelity and physical flexibility possible. The overall flexibility of the cable is enhanced through the use of conductor insulation materials, which provide extremely low durometer ratings while still offering excellent sonic performance. A heavy duty black matte outer jacket provides the durability required of a professional duty cable while also maintaining excellent overall flexibility. We offer the NSSC4 series cables in both 14 gauge and 12 gauge versions, in standard lengths from 3 feet to 100 feet. Should your application require the cable to "break-out" at either end to 1/4" phone plugs, this can be done for an additional fee and by simply adding a "P" suffix to the end of the cable's model number.

#### **12 GAUGE CABLES**

<b>MODEL #</b>	<b>LENGTH</b>
<b>NSSC412-3</b>	<b>3 FT.</b>
<b>NSSC412-6</b>	<b>6 FT.</b>
<b>NSSC412-10</b>	<b>10 FT.</b>
<b>NSSC412-20</b>	<b>20 FT.</b>
<b>NSSC412-25</b>	<b>25 FT.</b>
<b>NSSC412-30</b>	<b>30 FT.</b>
<b>NSSC412-50</b>	<b>50 FT.</b>
<b>NSSC412-75</b>	<b>75 FT.</b>
<b>NSSC412-100</b>	<b>100 FT.</b>

#### **14 GAUGE CABLES**

<b>MODEL #</b>	<b>LENGTH</b>
<b>NSSC414-3</b>	<b>3 FT.</b>
<b>NSSC414-6</b>	<b>6 FT.</b>
<b>NSSC414-10</b>	<b>10 FT.</b>
<b>NSSC414-20</b>	<b>20 FT.</b>
<b>NSSC414-25</b>	<b>25 FT.</b>
<b>NSSC414-30</b>	<b>30 FT.</b>
<b>NSSC414-50</b>	<b>50 FT.</b>
<b>NSSC414-75</b>	<b>75 FT.</b>
<b>NSSC414-100</b>	<b>100 FT.</b>



## ***MULTI-CHANNEL SPEAKER CABLES***

### ***NSSC8 SERIES***

The Quantum NSSC8 Neutrik Speakon Speaker Cable series is designed to accommodate amplifier to speaker and speaker to speaker applications on units utilizing the Neutrik brand eight-conductor NL8FC speakon connectors. The NSSC8 series cables utilize our Q-481214 series multi-conductor speaker cable. This cable utilizes four conductors of a 12-gauge OFHC copper and four conductors of 14 gauge OFHC copper. This cable design incorporates individual conductor strand counts that have been specifically chosen to optimize the coupling response between amplifier and speaker, as well as to achieve the audio clarity and tonal balance possible. The overall flexibility of the cable is enhanced through the use of conductor insulation materials, which provide extremely low durometer ratings while still offering excellent sonic performance. A heavy duty black matte outer jacket provides the durability required of a professional duty cable while also maintaining excellent overall flexibility. We offer the NSSC8 series cables in lengths from 3 feet to 100 feet.

#### ***NSSC8 CABLES***

<b>MODEL #</b>	<b>LENGTH</b>
<b>NSSC8-3</b>	<b>3 FT.</b>
<b>NSSC8-6</b>	<b>6 FT.</b>
<b>NSSC8-10</b>	<b>10 FT.</b>
<b>NSSC8-20</b>	<b>20 FT.</b>
<b>NSSC8-25</b>	<b>25 FT.</b>
<b>NSSC8-30</b>	<b>30 FT.</b>
<b>NSSC8-50</b>	<b>50 FT.</b>
<b>NSSC8-75</b>	<b>75 FT.</b>
<b>NSSC8-100</b>	<b>100 FT.</b>



*speaker cables*

The Quantum PAS, Performer Audio Snake, series was designed with the professional user in mind. The low-profile stage boxes are fabricated from heavy gauge steel to provide the durability required in a professional duty, audio snake assembly. A die cast handle provides a means of safely handling the cable. Large non-skid rubber feet are bolted to the base of the unit to prevent the unwanted movement of the stage box during use. Heavy-duty metal cable grips are incorporated to provide the utmost strain relief, while being extremely resistant to breakage. The Amphenol brand XLR connectors have metal housings rather than plastic, which resist breakage as well as assure you that the audio signal will remain fully shielded. All male XLR connectors utilize pin contacts that are a solid “machined” contact in an effort to provide the greatest durability level possible. To provide you with the best audio performance possible and most reliable connections, all connectors on the PAS are hand soldered.

The Q-5100 series multi-pair cable used in the PAS is designed to provide optimum audio performance over long cable runs. All materials utilized in the cable design, as well as the construction techniques utilized in the manufacturing process, were chosen to provide the best sonic performance and physical characteristics possible in an audio snake. To provide the best audio path possible, the Q-5100 series multi-pair cable utilizes finely stranded oxygen-free high conductivity, bare copper conductors. The benefits of this design are numerous. First, the use of the higher purity oxygen-free copper provides a superior signal path over the copper typically utilized in many audio snakes. Secondly, by utilizing more finely stranded conductors in our snake cable, we are able to improve the ability of the cable to transmit higher frequency information. Another definite advantage to the finer stranding is that the overall flexibility of the cable is improved.

The insulation material utilized on the individual conductors has been chosen due to its superior electrical characteristics. This insulation material produces extremely low capacitance figures, which typically measure slightly more than half if the capacitance found in other audio snakes. Since cable capacitance adversely affects the high frequency regions of an audio signal, the utilization of this insulation compound provides superior audio performance over other insulation materials.

To preserve the integrity of the audio signal, each channel in the cable is individually shielded with a 100% coverage aluminum foil tape. A “foil-free” edge design provides isolation between the shields of individual channels. The foil utilized in the cable is of a special design to minimize the possibility for transmitting mechanically induced noise.

The outer jacket of the Q-5100 series audio cable is designed to provide maximum protection against cuts and tears due to the environment audio snakes typically encounter. The special compounds used in formulating the jacket material were chosen due to their tendency to produce an extremely flexible outer jacket while also offering the necessary resistance to cuts and tears.

Fanouts on the PAS are color-coded within groups for ease of identification during connection. Individual audio channels are clearly identified during connection. Individual audio channels are clearly identified with imprinted shrink tubing. Metal cable bales are provided at the fanout to provide suitable strain relief for the audio snake while in use.

Performer series snakes are available with either XLR, or balanced 1/4” returns. For an optional charge, both XLR and balanced 1/4” connections for each return channel can be placed on the stage box with the 1/4” returns wired to the parallel with the XLR males.

*Available models of performer series audio snakes are listed on the following page*





MODEL	CONFIGURATION	LENGTH
PAS8X0*-25	8 MIC, 0 RETURN	25 FT.
PAS8X0*-50	8 MIC, 0 RETURN	50 FT.
PAS8X0*-75	8 MIC, 0 RETURN	75 FT.
PAS8X0*-100	8 MIC, 0 RETURN	100 FT.
PAS8X0*-125	8 MIC, 0 RETURN	125 FT.
PAS8X0*-150	8 MIC, 0 RETURN	150 FT.
PAS8X4*-75	8 MIC, 4 RETURN	75 FT.
PAS8X4*-100	8 MIC, 4 RETURN	100 FT.
PAS8X4*-125	8 MIC, 4 RETURN	125 FT.
PAS8X4*-150	8 MIC, 4 RETURN	150 FT.
PAS12X0*M-25	12 MIC, 0 RETURN	25 FT.
PAS12X0*M-50	12 MIC, 0 RETURN	50 FT.
PAS12X0*M-75	12 MIC, 0 RETURN	75 FT.
PAS12X0*M-100	12 MIC, 0 RETURN	100 FT.
PAS12X0*M-125	12 MIC, 0 RETURN	125 FT.
PAS12X0*M-150	12 MIC, 0 RETURN	150 FT.
PAS12X4*-75	12 MIC, 4 RETURN	75 FT.
PAS12X4*-100	12 MIC, 4 RETURN	100 FT.
PAS12X4*-125	12 MIC, 4 RETURN	125 FT.
PAS12X4*-150	12 MIC, 4 RETURN	150 FT.
PAS16X0*-25	16 MIC, 0 RETURN	25 FT.
PAS16X0*-50	16 MIC, 0 RETURN	50 FT.
PAS16X0*-100	16 MIC, 0 RETURN	100 FT.
PAS16X0*-125	16 MIC, 0 RETURN	125 FT.
PAS16X0*-150	16 MIC, 0 RETURN	150 FT.
PAS16X4*-75	16 MIC, 4 RETURN	75 FT.
PAS16X4*-100	16 MIC, 4 RETURN	100 FT.
PAS16X4*-125	16 MIC, 4 RETURN	125 FT.
PAS16X4*-150	16 MIC, 4 RETURN	150 FT.
PAS24X0*-75	24 MIC, 0 RETURN	75 FT.
PAS24X0*-100	24 MIC, 0 RETURN	100 FT.
PAS24X0*-125	24 MIC, 0 RETURN	125 FT.
PAS24X0*-150	24 MIC, 0 RETURN	150 FT.
PAS24X4*-75	24 MIC, 4 RETURN	75 FT.
PAS24X4*-100	24 MIC, 4 RETURN	100 FT.
PAS24X4*-125	24 MIC, 4 RETURN	125 FT.
PAS24X4*-150	24 MIC, 4 RETURN	150 FT.
PAS24X8*-75	24 MIC, 8 RETURN	75 FT.
PAS24X8*-100	24 MIC, 8 RETURN	100 FT.
PAS24X8*-125	24 MIC, 8 RETURN	125 FT.
PAS24X8*-150	24 MIC, 8 RETURN	150 FT.
PAS32X0*M-75	32 MIC, 0 RETURN	75 FT.
PAS32X0*M-100	32 MIC, 0 RETURN	100 FT.
PAS32X0*M-125	32 MIC, 0 RETURN	125 FT.
PAS32X0*M-150	32 MIC, 0 RETURN	150 FT.
PAS32X8*-75	32 MIC, 8 RETURN	75 FT.
PAS32X8*-100	32 MIC, 8 RETURN	100 FT.
PAS32X8*-125	32 MIC, 8 RETURN	125 FT.
PAS32X8*-150	32 MIC, 8 RETURN	150 FT.

**CUSTOM LENGTHS AVAILABLE  
UPON REQUEST**

email at [sales@quantumaudiodesigns.com](mailto:sales@quantumaudiodesigns.com)

PAS40X0*-100	40 MIC, 0 RETURN	100 FT.
PAS40X0*-125	40 MIC, 0 RETURN	125 FT.
PAS40X0*-150	40 MIC, 0 RETURN	150 FT.
PAS40X8*-100	40 MIC, 8 RETURN	100 FT.
PAS40X8*-125	40 MIC, 8 RETURN	125 FT.
PAS40X8*-150	40 MIC, 8 RETURN	150 FT.
PAS48X0*M-100	48 MIC, 0 RETURN	100 FT.
PAS48X0*M-125	48 MIC, 0 RETURN	125 FT.
PAS48X0*M-150	48 MIC, 0 RETURN	150 FT.

*\*Denotes type of returns*

*M=All Mic (XLR F on Box, XLR M on fanout)*

*X=XLR on box and fanout*

*DRS= Dual returns (both XLR and 1/4" Stereo)  
on box with 1/4" TRS plugs on fanout*

*DRX= Dual returns (both XLR and 1/4"  
Stereo on box with XLR females on fanout)*

*PAS are also available with Switchcraft  
or Neutrik brand connectors upon request.  
To specify Switchcraft brand connectors, please  
add SWsuffix to model number. Should you  
require Neutrik brand connectors, please add  
NE suffix to model number. For example:  
PAS24XS-100SW or PAS24X4S-100NE.  
Additional fees will apply to audio snakes that  
require either Switchcraft or Neutrik  
brand connectors.*



performer audio snakes

1.888.545.4404 fax 1.573.545.4411

## PERFORMER SERIES MULTI-TRACK CABLES

Our "Performer" Multi-Track series of audio cables are designed for applications requiring multiple channels of line and/ or microphone level signals to be transmitted within the same cable. Ideal for recording studios, broadcast facilities, and live sound reinforcement situations, the "Performer Multi-Tracks can be configured to your exact specifications. To assure you of the best audio performance possible, we utilize our Q-5100 series low capacitance, oxygen-free, multi-conductor cable. To provide a positive, long lasting connection, the "Performer" series Multi-Tracks are terminated with G & H and Amphenol brand connectors. As an option, we also offer the "Performer" series Multi-Track cables with gold-plated RCA phono, unbalanced 1/4" phone plugs, and XLR connectors. The following is a list of our standard configuration "Performer" Multi-Track series cables:

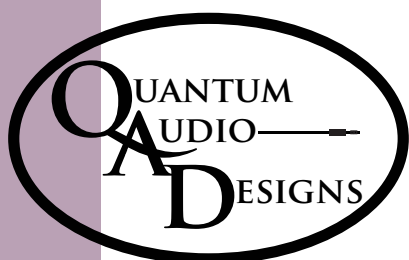
### 4 CHANNEL MULTI-TRACKS

MODEL #	LENGTH	CONNECTORS	MODEL #	LENGTH	CONNECTORS
PMT4-10CC	10 FT.	RCA MALE TO RCA MALE	PMT4-20PP	20 FT.	1/4" MALE TO 1/4" MALE
PMT4-15CC	15 FT.	RCA MALE TO RCA MALE	PMT4-25PP	25 FT.	1/4" MALE TO 1/4" MALE
PMT4-20CC	20 FT.	RCA MALE TO RCA MALE	PMT4-10FM	10 FT.	XLR F TO XLR M
PMT4-25CC	25 FT.	RCA MALE TO RCA MALE	PMT4-15FM	15 FT.	XLR F TO XLR M
PMT4-10CP	10 FT.	RCA MALE TO 1/4" MALE	PMT4-20FM	20 FT.	XLR F TO XLR M
PMT4-15CP	15 FT.	RCA MALE TO 1/4" MALE	PMT4-25FM	25 FT.	XLR F TO XLR M
PMT4-20CP	20 FT.	RCA MALE TO 1/4" MALE	PMT4-10SS	10 FT.	TRS MALE TO TRS MALE
PMT4-25CP	25 FT.	RCA MALE TO 1/4" MALE	PMT4-15SS	15 FT.	TRS MALE TO TRS MALE
PMT4-10PP	10 FT.	1/4" MALE TO 1/4" MALE	PMT4-20SS	20 FT.	TRS MALE TO TRS MALE
PMT4-15PP	15 FT.	1/4" MALE TO 1/4" MALE	PMT4-25SS	25 FT.	TRS MALE TO TRS MALE

### 8 CHANNEL MULTI-TRACKS

MODEL #	LENGTH	CONNECTORS	MODEL #	LENGTH	CONNECTORS
PMT8-10CC	10 FT.	RCA MALE TO RCA MALE	PMT8-20PP	20 FT.	1/4" MALE TO 1/4" MALE
PMT8-15CC	15 FT.	RCA MALE TO RCA MALE	PMT8-25PP	25 FT.	1/4" MALE TO 1/4" MALE
PMT8-20CC	20 FT.	RCA MALE TO RCA MALE	PMT8-10FM	10 FT.	XLR F TO XLR M
PMT8-25CC	25 FT.	RCA MALE TO RCA MALE	PMT8-15FM	15 FT.	XLR F TO XLR M
PMT8-10CP	10 FT.	RCA MALE TO 1/4" MALE	PMT8-20FM	20 FT.	XLR F TO XLR M
PMT8-15CP	15 FT.	RCA MALE TO 1/4" MALE	PMT8-25FM	25 FT.	XLR F TO XLR M
PMT8-20CP	20 FT.	RCA MALE TO 1/4" MALE	PMT8-10SS	10 FT.	TRS MALE TO TRS MALE
PMT8-25CP	25 FT.	RCA MALE TO 1/4" MALE	PMT8-15SS	15 FT.	TRS MALE TO TRS MALE
PMT8-10PP	10 FT.	1/4" MALE TO 1/4" MALE	PMT8-20SS	20 FT.	TRS MALE TO TRS MALE
PMT8-15PP	15 FT.	1/4" MALE TO 1/4" MALE	PMT8-25SS	25 FT.	TRS MALE TO TRS MALE

See more individual models,  
length and connectors  
on next page.





# PERFORMER SERIES MULTI-TRACK CABLES

multi-channel audio

## 12 CHANNEL MULTI-TRACKS

MODEL #	LENGTH	CONNECTORS
PMT12-10CC	10 FT.	RCA MALE TO RCA MALE
PMT12-15CC	15 FT.	RCA MALE TO RCA MALE
PMT12-20CC	20 FT.	RCA MALE TO RCA MALE
PMT12-25CC	25 FT.	RCA MALE TO RCA MALE
PMT12-10CP	10 FT.	RCA MALE TO ¼" MALE
PMT12-15CP	15 FT.	RCA MALE TO ¼" MALE
PMT12-20CP	20 FT.	RCA MALE TO ¼" MALE
PMT12-25CP	25 FT.	RCA MALE TO ¼" MALE
PMT12-10PP	10 FT.	¼" MALE TO ¼" MALE
PMT12-15PP	15 FT.	¼" MALE TO ¼" MALE
PMT12-20PP	20 FT.	¼" MALE TO ¼" MALE
PMT12-25PP	25 FT.	¼" MALE TO ¼" MALE
PMT12-10FM	10 FT.	XLR F TO XLR M
PMT12-15FM	15 FT.	XLR F TO XLR M
PMT12-20FM	20 FT.	XLR F TO XLR M
PMT12-25FM	25 FT.	XLR F TO XLR M
PMT12-10SS	10 FT.	TRS MALE TO TRS MALE
PMT12-15SS	15 FT.	TRS MALE TO TRS MALE
PMT12-20SS	20 FT.	TRS MALE TO TRS MALE
PMT12-25SS	25 FT.	TRS MALE TO TRS MALE
PMT12-10SF	10 FT.	¼" TRS TO XLR F
PMT12-15SF	15 FT.	¼" TRS TO XLR F
PMT12-20SF	20 FT.	¼" TRS TO XLR F
PMT12-25SF	25 FT.	¼" TRS TO XLR F
PMT12-10SM	10 FT.	¼" TRS TO XLR M
PMT12-15SM	15 FT.	¼" TRS TO XLR M
PMT12-20SM	20 FT.	¼" TRS TO XLR M
PMT12-25SM	25 FT.	¼" TRS TO XLR M

## 24 CHANNEL MULTI-TRACKS

MODEL#	LENGTH	CONNECTORS
PMT24-10CC	10 FT.	RCA MALE TO RCA MALE
PMT24-15CC	15 FT.	RCA MALE TO RCA MALE
PMT24-20CC	20 FT.	RCA MALE TO RCA MALE
PMT24-25CC	25 FT.	RCA MALE TO RCA MALE
PMT24-10CP	10 FT.	RCA MALE TO ¼" MALE
PMT24-15CP	15 FT.	RCA MALE TO ¼" MALE
PMT24-20CP	20 FT.	RCA MALE TO ¼" MALE
PMT24-25CP	25 FT.	RCA MALE TO ¼" MALE
PMT24-10PP	10 FT.	¼" MALE TO ¼" MALE
PMT24-15PP	15 FT.	¼" MALE TO ¼" MALE
PMT24-20PP	20 FT.	¼" MALE TO ¼" MALE
PMT24-25PP	25 FT.	¼" MALE TO ¼" MALE
PMT24-10FM	10 FT.	XLR F TO XLR M
PMT24-15FM	15 FT.	XLR F TO XLR M
PMT24-20FM	20 FT.	XLR F TO XLR M
PMT24-25FM	25 FT.	XLR F TO XLR M
PMT24-10SS	10 FT.	TRS MALE TO TRS MALE
PMT24-15SS	15 FT.	TRS MALE TO TRS MALE
PMT24-20SS	20 FT.	TRS MALE TO TRS MALE
PMT24-25SS	25 FT.	TRS MALE TO TRS MALE
PMT24-10SF	10 FT.	¼" TRS TO XLR F
PMT24-15SF	15 FT.	¼" TRS TO XLR F
PMT24-20SF	20 FT.	¼" TRS TO XLR F
PMT24-25SF	25 FT.	¼" TRS TO XLR F
PMT24-10SM	10 FT.	¼" TRS TO XLR M
PMT24-15SM	15 FT.	¼" TRS TO XLR M
PMT24-20SM	20 FT.	¼" TRS TO XLR M
PMT24-25SM	25 FT.	¼" TRS TO XLR M

## 16 CHANNEL MULTI-TRACKS

MODEL#	LENGTH	CONNECTORS
PMT16-10CC	10 FT.	RCA MALE TO RCA MALE
PMT16-15CC	15 FT.	RCA MALE TO RCA MALE
PMT16-20CC	20 FT.	RCA MALE TO RCA MALE
PMT16-25CC	25 FT.	RCA MALE TO RCA MALE
PMT16-10CP	10 FT.	RCA MALE TO ¼" MALE
PMT16-15CP	15 FT.	RCA MALE TO ¼" MALE
PMT16-20CP	20 FT.	RCA MALE TO ¼" MALE
PMT16-25CP	25 FT.	RCA MALE TO ¼" MALE
PMT16-10PP	10 FT.	¼" MALE TO ¼" MALE
PMT16-15PP	15 FT.	¼" MALE TO ¼" MALE
PMT16-20PP	20 FT.	¼" MALE TO ¼" MALE
PMT16-25PP	25 FT.	¼" MALE TO ¼" MALE
PMT16-10FM	10 FT.	XLR F TO XLR M
PMT16-15FM	15 FT.	XLR F TO XLR M
PMT16-20FM	20 FT.	XLR F TO XLR M
PMT16-25FM	25 FT.	XLR F TO XLR M
PMT16-10SS	10 FT.	TRS MALE TO TRS MALE
PMT16-15SS	15 FT.	TRS MALE TO TRS MALE
PMT16-20SS	20 FT.	TRS MALE TO TRS MALE
PMT16-25SS	25 FT.	TRS MALE TO TRS MALE
PMT16-10SF	10 FT.	¼" TRS TO XLR F
PMT16-15SF	15 FT.	¼" TRS TO XLR F
PMT16-20SF	20 FT.	¼" TRS TO XLR F
PMT16-25SF	25 FT.	¼" TRS TO XLR F
PMT16-10SM	10 FT.	¼" TRS TO XLR M
PMT16-15SM	15 FT.	¼" TRS TO XLR M
PMT16-20SM	20 FT.	¼" TRS TO XLR M
PMT16-25SM	25 FT.	¼" TRS TO XLR M

## 32 CHANNEL MULTI-TRACKS

MODEL #	LENGTH	CONNECTORS
PMT32-10CC	10 FT.	RCA MALE TO RCA MALE
PMT32-15CC	15 FT.	RCA MALE TO RCA MALE
PMT32-20CC	20 FT.	RCA MALE TO RCA MALE
PMT32-25CC	25 FT.	RCA MALE TO RCA MALE
PMT32-10CP	10 FT.	RCA MALE TO ¼" MALE
PMT32-15CP	15 FT.	RCA MALE TO ¼" MALE
PMT32-20CP	20 FT.	RCA MALE TO ¼" MALE
PMT32-25CP	25 FT.	RCA MALE TO ¼" MALE
PMT32-10PP	10 FT.	¼" MALE TO ¼" MALE
PMT32-15PP	15 FT.	¼" MALE TO ¼" MALE
PMT32-20PP	20 FT.	¼" MALE TO ¼" MALE
PMT32-25PP	25 FT.	¼" MALE TO ¼" MALE
PMT32-10FM	10 FT.	XLR F TO XLR M
PMT32-15FM	15 FT.	XLR F TO XLR M
PMT32-20FM	20 FT.	XLR F TO XLR M
PMT32-25FM	25 FT.	XLR F TO XLR M
PMT32-10SS	10 FT.	TRS MALE TO TRS MALE
PMT32-15SS	15 FT.	TRS MALE TO TRS MALE
PMT32-20SS	20 FT.	TRS MALE TO TRS MALE
PMT32-25SS	25 FT.	TRS MALE TO TRS MALE
PMT32-10SF	10 FT.	¼" TRS TO XLR F
PMT32-15SF	15 FT.	¼" TRS TO XLR F
PMT32-20SF	20 FT.	¼" TRS TO XLR F
PMT32-25SF	25 FT.	¼" TRS TO XLR F
PMT32-10SM	10 FT.	¼" TRS TO XLR M
PMT32-15SM	15 FT.	¼" TRS TO XLR M
PMT32-20SM	20 FT.	¼" TRS TO XLR M
PMT32-25SM	25 FT.	¼" TRS TO XLR M

Designed to meet the needs of aspiring musicians or the occasional weekend warrior musical reunion, the Gig Lines series of audio snakes offer great performance at extremely affordable price points. All Gig Lines audio snakes incorporate heavy duty steel stageboxes with non-skid rubber feet, high performance / low capacitance cabling, metal shelled cable mount xlr fanout connectors, and color coded fanouts. Targeted to be a lower cost alternative to our more professional duty Performer series audio snakes, the Gig Line series audio snakes offer exceptional fidelity and durability. All Gig Lines series stageboxes include xlr microphone inputs and balanced 1/4" connectors for all return channels, although fanout connectors for those return channels can be specified with either balanced 1/4" phone plugs or xlr females for no additional fee. Standard configurations and cable lengths for Gig Lines are listed below.

MODEL	CONFIGURATION	LENGTH
8X4*-50	8 MIC, 4 RETURN	50 FT.
8X4*-75	8 MIC, 4 RETURN	75 FT.
8X4*-100	8 MIC, 4 RETURN	100 FT.
12X4*-50	12 MIC, 4 RETURN	50 FT.
12X4*-75	12 MIC, 4 RETURN	75 FT.
12X4*-100	12 MIC, 4 RETURN	100 FT.
16X4*-50	16 MIC, 4 RETURN	50 FT.
16X4*-75	16 MIC, 4 RETURN	75 FT.
16X4*-100	16 MIC, 4 RETURN	100 FT.
24X4*-50	24 MIC, 4 RETURN	50 FT.
24X4*-75	24 MIC, 4 RETURN	75 FT.
24X4*-100	24 MIC, 4 RETURN	100 FT.





## POWER SNAKES

Designed to accommodate those sound reinforcement applications where the sound engineer prefers to locate their mixing console (a mixer with internal power amplifiers) some distance from the performance stage and still be able to neatly deliver the mixer's speaker level signal back to the stage area. In even the most demanding of applications, the Quantum GPS series audio snakes will surpass even the most stringent requirements.

In addition to incorporating the same state of the art materials and designs in their overall construction as our Quantum PAS series audio snakes, the GPS series "Power Snakes" incorporate two additional internal speaker lines into the cable. This permits the user to receive microphone level signals from the stagebox and to send speaker level and line level signals from the mixing console back to the stagebox within the same cable. As is with all of our more expensive Performer series snakes, the GPS audio snakes utilize the same oxygen-free copper conductors and low capacitance insulation materials as is used on our low impedance microphone cables.

Available configurations of GPS series power snakes include 8 and 12 mic input versions, with both including 2 unbalanced 1/4" line level returns, and 2 discrete 14 gauge speaker lines. It should be noted that at the stagebox end of the snake, each speaker line is wired to a pair of 1/4" output connectors. For optimum performance, maximum recommended length on any configuration of power snake is 100 feet. Standard length GPS series assemblies are listed below.

MODEL	CONFIGURATION	LENGTH
GPS8X2X2*-50	8 MIC, 2 RETURN, 2 OUT	50 FT.
GPS8X2X2*-75	8 MIC, 2 RETURN, 2 OUT	75 FT.
GPS8X2X2*-100	8 MIC, 2 RETURN, 2 OUT	100 FT.
GPS12X2X2*-50	12 MIC, 2 RETURN, 2 OUT	50 FT.
GPS12X2X2*-75	12 MIC, 2 RETURN, 2 OUT	75 FT.
GPS12X2X2*-100	12 MIC, 2 RETURN, 2 OUT	100 FT.

\*Denotes type of returns

P suffix = 1/4" unbalanced returns (this is standard configuration for GPS snakes)

S suffix = 1/4" balanced returns (available upon special request for an extra fee)

X suffix = XLR female at fanout, 1/4" balanced connector on box (available upon special request for an extra fee)



audio snakes

## MDB-101 "MATCHMAKER" DIRECT BOX

The MDB-101 Matchmaker Direct Box is engineered to provide excellent audio performance in a durable and cost effective package. The Matchmaker provides guitarists, bassists, and keyboardists a means of producing a high fidelity, low impedance microphone level audio feed simultaneously to a mixing console, while providing the original high impedance, unbalanced signal to the onstage amplification utilized in most performing environments. The Matchmaker is designed to accept either an instrument level signal directly from the instrument, a line level signal from the output of an effective devise or amplifier pre am section, or a speaker level signal from the speaker output jack of an instrument amplifier. The Matchmaker Direct Box also incorporates a special "cabinet emulation" feature allowing the musician to more closely duplicate the onstage amplifications' tonal qualities in the additional audio feed when a "ground loop" is encountered between the onstage amplification and the audio equipment being fed from the balanced output of the MDB-101, a ground lift switch is provided.





## SAB SERIES SPEAKON ADAPTER BOXES

Finally, a reliable way to provide multiple speaker level signals from a single speaker level source. The SAB series adapter boxes allow the user a variety of options when dealing with Speakon style connectors.

The most basic of the SAB boxes, the SAB-202, allows you to feed two speaker cabinets with 2 pole Speakon connections from a single 2 pole Speakon input.

For those applications when you need to convert a normal 1/4" phone plug to 2 pole speakon outputs, or vice versa, we offer the SAB-Q02. This unit provides one locking 1/4" phone jack input wired in parallel to two NL2MP Speakon outputs. Due to this parallel wiring scheme any of the three connectors can actually be used as the "input" into the adapter box, thereby making it possible to use the 1/4" phone jack as an output rather than an input.

We also offer the SBA-404, which is a 4-pole version, which also provides two identical speakon output connectors from single 4-pole speakon input. Although the SBA-404 accepts the 4 pole NL4FC connectors, it can also be used with the 2 pole NL2FC connectors as well, which will provide audio signal from the 1+, 1- terminals of the NL4MP input connector.

In the event your application incorporates a BI-amplified signal that requires the use of both Speakons and 1/4" phone jacks, we offer the SAB-402Q. This unit incorporates one NL4MP connector wired to two 1/4" phone jacks. Each of these 1/4" phone jacks are fed separately from a pair of the 4 available poles of the NL4MP connector. One of the 1/4" jacks is fed from the 1+, 1- poles and the other 1/4" jack is fed from the 2+, 2- poles. Due to the wiring scheme used, this Speakon adapter box can either be used to feed a Speakon output from the two discrete 1/4" phone jacks, or to feed two 1/4" outputs from a single Speakon input.



*SAB-Q02  
input side*



*SAB-202  
output side*



## FLOOR POCKET STAGE BOXES

Designed for those permanent installation applications that require the audio/video connection points to be located in convenient, yet unobtrusive locations, the Quantum line of recessed floor pocket stageboxes will meet your needs. We offer three basic models of floor pocket stageboxes, with each model having the ability to house a connector mounting plate which can be customized as per your particular installation requirement. All three models are available in either a gold vein (similar to appearance to antique brass) or a black power coat finish. All of the various models of recessed stageboxes have cable entry cutouts in the lids that will permit the lids to be closed with cables plugged in the box's internal connection points.

The first, and the most compact of our floor pocket stageboxes, is called the Mini Floor Box, or MFBOX5. This box is 5 1/2" inches deep and can house up to a maximum of 6 XLR or 1/4" inch connectors.

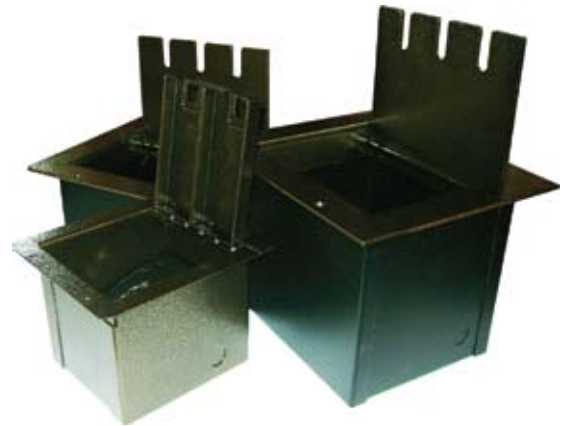
The two other recessed floor pocket stageboxes we offer are the FBOX5 and FBOX8. These boxes are extremely heavy duty in construction and are designed for applications where heavy items such as pianos, amplifiers, or equipment cases may be accidentally rolled over the stage box lid from time to time. The FBOX5 is 5 inches deep and will house up to 12 XLR or 1/4" connectors, while the 8 inch deep FBOX8 can hold up to a maximum of 18 XLR or 1/4" inch connectors.

For ease of wiring, all Quantum recessed floor pocket stageboxes provide 4 different cable entry points via conduit knockouts on the recessed section of the stage box. All connector mounting plates in each of the boxes are removable as to allow for easy installation and servicing.

We also offer custom pre-wired versions of these boxes, with either labeled and prepped fanouts, or fully terminated fanouts as to provide you with the ability to install, plug and play. All boxes can be pre-wired as per your individual specifications.



*MFBOX (MINI BOX)*



*FBOX5 (FULL SIZE)*

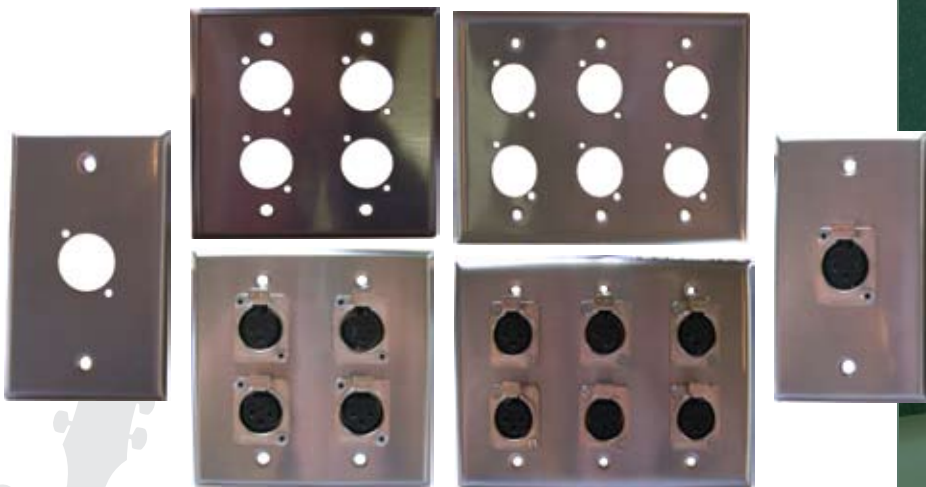


## STAINLESS STEEL WALL PLATES

For your permanent installation needs we offer a full line of stainless steel wallplates in single, double, and triple gang sizes. As a standard configuration, we utilize Amphenol brand xlr connectors, Neutrik brand speakon and locking ¼" connectors and Senior brand ¼" phone and RCA phono jacks. Upon your request, for an extra fee, we can also substitute Switchcraft and Neutrik brand connectors for our standard brands of connectors on most of our wallplate configurations. On wallplates which incorporate either ¼" phone jacks or RCA phono jacks, as standard practice, we utilize isolation washers as to help prevent grounding problems. Please consult with your Quantum Audio Designs sales representative when ordering to determine which of our numerous wallplate configurations will most closely fit your installation needs.

MODEL	PLATE SIZE	DESCRIPTION
SGP1-S11	SINGLE	1) ISOLATED ¼" MONO PHONE JACKS
SGP2-S11	SINGLE	2) ISOLATED ¼" MONO PHONE JACKS
SGP1-S12B	SINGLE	1) ISOLATED ¼" TRS PHONE JACKS
SGP2-S12B	SINGLE	2) ISOLATED ¼" TRS PHONE JACKS
DGP4-S11	DOUBLE	4) ISOLATED ¼" MONO PHONE JACKS
DGP6-S11	DOUBLE	6) ISOLATED ¼" MONO PHONE JACKS
DGP4-S12B	DOUBLE	4) ISOLATED ¼" TRS PHONE JACKS
DGP6-S12B	DOUBLE	6) ISOLATED ¼" TRS PHONE JACKS
SGP1-XFA	SINGLE	1) AMPHENOL XLR FEMALE
SGP2-XFA	SINGLE	2) AMPHENOL XLR FEMALES
SGP1-XMA	SINGLE	1) AMPHENOL XLR MALE
SGP2-XMA	SINGLE	2) AMPHENOL XLR MALES
DGP3-XFA	DOUBLE	3) AMPHENOL XLR FEMALE
DGP4-XFA	DOUBLE	4) AMPHENOL XLR FEMALES
DGP3-XMA	DOUBLE	3) AMPHENOL XLR MALE
DGP4-XMA	DOUBLE	4) AMPHENOL XLR MALES
SGP1-RCA	SINGLE	1) ISOLATED RCA PHONE JACK
SGP2-RCA	SINGLE	2) ISOLATED RCA PHONE JACKS
SGP1-NL4	SINGLE	1) NEUTRIK NL4MP SPEAKON
SGP2-NL4	SINGLE	2) NEUTRIK NL4MP SPEAKONS
SGP1-NS4	SINGLE	1) NEUTRIK NL4MP-R SPEAKON
SGP1-NS8	SINGLE	1) NEUTRIK NL8MP-R SPEAKON
SGP-B	SINGLE	BLANK/ NO HOLES
DGP-B	DOUBLE	BLANK/ NO HOLES

1 gang- 4 1/2" x 2 3/4" 2 gang- 4 1/2" x 4 1/2" 3 gang- 4 1/2" x 6 11/16"



## INSTALLATION GRADE

### BULK CABLE

MODEL	DESCRIPTION	APPLICATIONS
<b>Q-3022I.E</b>	2 conductor cable, 22 ga. 100% coverage foil shield CMR/CL3R rated, .128 inch O.D.	<i>Low-Z mic &amp; balanced line level for permanent installs</i>
<b>Q-3100I.K</b>	2 conductor cable, 24 ga. Oxygen free, foil, shield, CL rated, .175 inch. O.D.	<i>Low-Z mic &amp; balanced line level for permanent install requiring Plenum cable</i>
<b>Q-3022PL.N</b>	2 conductor cable, 22 ga. 100% coverage foiled shield, CL2P/CMP rated	<i>Low-Z mic &amp; balanced line level for permanent install requiring Plenum cable</i>
<b>Q-4018I.E</b>	2 conductor cable, twisted pair design, 18 ga. Conductors, CMR/CL3R rated	<i>Speaker cabling for permanent installs for requiring riser rated cable</i>
<b>Q-4016I.E</b>	2 conductor cable, twisted pair design, 16 ga. Conductors, CMR/CL3R rated	<i>Speaker cabling for permanent installs requiring riser rated cable</i>
<b>Q-404I.E</b>	2 conductor cable, twisted pair design, 14 ga. Conductors, CMR/CL3R rated	<i>Speaker cabling for permanent installs for requiring riser rated cable</i>
<b>Q-4012I.E</b>	2 conductor cable, twisted pair design, 12 ga. Conductors, CMR/CL3R rated	<i>Speaker cabling for permanent installs for requiring riser rated cable</i>
<b>Q-4018PL.N</b>	2 conductor cable, twisted pair design, 18 ga. Conductors, unshielded, CMP/CL2P rating	<i>Speaker cabling for permanent installs requiring plenum cable</i>
<b>Q-4016PL.N</b>	2 conductor cable, twisted pair design, 16 ga. Conductors, unshielded, CMP/CL2P rating	<i>Speaker cabling for permanent installs requiring plenum cable</i>
<b>Q-4014PL.N</b>	2 conductor cable, twisted pair design, 14 ga. Conductors, unshielded, CMP/CL2P rating	<i>Speaker cabling for permanent installs requiring plenum cable</i>
<b>Q-4012PL.N</b>	2 conductor cable, twisted pair design, 12 ga. Conductors, unshielded, CMO/CL2P rating	<i>Speaker cabling for permanent installs requiring plenum cable</i>
<b>Q-4016ZIP.K</b>	2 conductor cable parallel (zip) design, 16 ga. Conductors, unshielded, black jacket	<i>Speaker cabling installs not requiring a fire rating, light duty, portable cordage</i>
<b>Q-4014ZIP.C</b>	2 conductor cable, parallel (zip) design, 14 ga. Conductors, unshielded, clear jacket	<i>Speaker cabling installs not requiring a fire rating, light duty, portable cordage</i>

### QUANTUM MULTI-CHANNEL “SNAKE” CABLE

<b>Q-5104</b>	4 pairs of individually shielded, oxygen-free (OFHC) 24 gauge conductors, 100% coverage foil shields.	<i>Audio snakes &amp; multi-tracks carrying microphone &amp; line level audio signals.</i>
<b>Q-5108</b>	8 pairs of individually shielded, oxygen-free (OFHC) 24 gauge conductors, 100% coverage foil shields.	<i>Audio snakes &amp; multi-tracks carrying microphone &amp; line level audio signals.</i>
<b>Q-5112</b>	12 pairs of individually shielded, oxygen-free (OFHC) 24 gauge conductors, 100% coverage foil shields.	<i>Audio snakes &amp; multi-tracks carrying microphone &amp; line level audio signals.</i>
<b>Q-5116</b>	16 pairs of individually shielded, oxygen-free (OFHC) 24 gauge conductors, 100% coverage foil shields.	<i>Audio snakes &amp; multi-tracks carrying microphone &amp; line level audio signals.</i>
<b>Q-5120</b>	20 pairs of individually shielded, oxygen-free (OFHC) 24 gauge conductors, 100% coverage foil shields.	<i>Audio snakes &amp; multi-tracks carrying microphone &amp; line level audio signals.</i>
<b>Q-5128</b>	28 pairs of individually shielded, oxygen-free (OFHC) 24 gauge conductors, 100% coverage foil shields.	<i>Audio snakes &amp; multi-tracks carrying microphone &amp; line level audio signals.</i>
<b>Q-5132</b>	32 pairs of individually shielded, oxygen-free (OFHC) 24 gauge conductors, 100% coverage foil shields.	<i>Audio snakes &amp; multi-tracks carrying microphone &amp; line level audio signals.</i>
<b>Q-5140</b>	40 pairs of individually shielded, oxygen-free (OFHC) 24 gauge conductors, 100% coverage foil shields.	<i>Audio snakes &amp; multi-tracks carrying microphone &amp; line level audio signals.</i>
<b>Q-5148</b>	48 pairs of individually shielded, oxygen-free (OFHC) 24 gauge conductors, 100% coverage foil shields.	<i>Audio snakes &amp; multi-tracks carrying microphone &amp; line level audio signals.</i>

### QUANTUM MULTI-CHANNEL “POWER SNAKE” CABLE

<b>Q-5108PS</b>	10 pairs of individually shielded, oxygen-free (OFHC) 24 gauge conductors, 100% coverage foil shields. 2 pairs, 14 gauge speaker cables	<i>Audio snakes for powered mixers carrying microphone, line and speaker level audio signals.</i>
<b>Q-5114PS</b>	14 pairs of individually shielded, oxygen-free (OFHC) 24 gauge conductors, 100% coverage foil shields. 2 pairs, 14 gauge speaker cables	<i>Audio snakes for powered mixers carrying microphone, line and speaker level audio signals.</i>



<i><b>MODEL</b></i>	<i><b>DESCRIPTION</b></i>	<i><b>APPLICATIONS</b></i>
<b>GL-2000</b>	Single conductor, 20 awg. Cable, 75% coverage serve shield, .240 in. O.D.	<i><b>Guitar, Hi-Z microphone</b></i>
<b>Q-2000</b>	Single conductor, 20 awg. Cable, 75% coverage serve shield, .245 in. O.D.	<i><b>Guitar, Hi-Z microphone</b></i>
<b>Q-2100</b>	Single conductor, oxygen-free, 20 awg. Cable, 95% coverage serve shield, .265 in. O.D.	<i><b>Guitar, Hi-Z microphone</b></i>
<b>Q-2300</b>	Single conductor, oxygen-free, 16 awg. Cable, 95% coverage serve shield, .310 in. O.D.	<i><b>Guitar, Hi-Z microphone</b></i>
<b>Q-3100</b>	Two conductor cable, oxygen-free copper, 24 ga. Conductors, 95% coverage serve shield, .250 in. O.D.	<i><b>Low-Z microphone, balanced line level</b></i>
<b>Q-3100M</b>	Miniature Two conductor cable, oxygen-free copper, 24 ga. Conductors, 95% coverage serve shield, .200 in. O.D.	<i><b>Low-Z microphone, balanced line level</b></i>
<b>Q-3200</b>	Four conductor cable, oxygen-free copper, 24 ga. Conductors, 95% coverage braid shield .245 in. O.D.	<i><b>Low-Z microphone, balanced line level, midi cable</b></i>
<b>Q-4118</b>	Two conductor cable, oxygen-free copper, 18 ga. Conductors, twisted pair design, .260 in. O.D.	<i><b>Power amplifier to speaker applications</b></i>
<b>Q-4116</b>	Two conductor cable, oxygen-free copper, 16 ga. Conductors, twisted pair design, .285 in. O.D.	<i><b>Power amplifier to speaker applications.</b></i>
<b>Q-4114</b>	Two conductor cable, oxygen-free copper, 14 ga. Conductors, twisted pair design, .360 in. O.D.	<i><b>Power amplifier to speaker applications.</b></i>
<b>Q-4112</b>	Two conductor cable, oxygen-free copper, 12 ga. Conductors, twisted pair design, .391 in. O.D.	<i><b>Power amplifier to speaker applications.</b></i>
<b>Q-4414</b>	Four conductor cable, oxygen-free copper, 14 ga. Conductors, twisted pair design, .400 in. O.D.	<i><b>Two channel speaker applications</b></i>
<b>Q-4412</b>	Four conductor cable, oxygen-free copper, 14 ga. Conductors, twisted pair design, .435 in. O.D.	<i><b>Two channel speaker applications</b></i>
<b>Q-481214</b>	Eight conductor cable, oxygen-free copper, 4) 12 ga. Conductors 4) 14 ga. Conductors, .545 in. O.D.	<i><b>Four channel speaker applications</b></i>

## BULK CONNECTORS

### AMPHENOL

<i><b>MODEL</b></i>	<i><b>APPLICATIONS</b></i>
<b>31,-10-75</b>	<i><b>BNC 75 OHM ISOLATED SOLDER RECEPTACLE NICKEL SHELL/CONTACTS</b></i>
<b>31-10-RFX</b>	<i><b>BNC 50 OHM ISOLATED SOLDER RECEPTACLE NICKEL SHELL/CONTACTS</b></i>
<b>31-320-RFX</b>	<i><b>BNC 50 OHM CRIMP PLUG NICKEL SHELL/GOLD CONTACTS RG58/141/142A CABLE</b></i>
<b>31-321-RFX</b>	<i><b>BNC 50 OHM CRIMP PLUG NICKEL SHELL/GOLD CONTACTS RG59/62 CABLE</b></i>
<b>31-71008-1000</b>	<i><b>BNC 75 OHM CRIMP PLUG NICKEL SHELL/GOLD CONTACTS RG59 CABLE</b></i>
<b>AC3F</b>	<i><b>3 PIN FEMALE CM XLR, NICKEL SHELL</b></i>
<b>AC3FB</b>	<i><b>3 PIN FEMALE CM XLR, BLACK SHELL</b></i>
<b>AC3FBAU</b>	<i><b>3 PIN FEMALE CM XLR, BLACK SHELL/GOLD CONTACTS</b></i>
<b>AC3FDP</b>	<i><b>3 PIN FEMALE PM XLR, PLASTIC</b></i>
<b>AC3FDZ</b>	<i><b>3 PIN FEMALE PM XLR, NICKEL "D" TYPE FLANGE</b></i>
<b>AC3FDZB</b>	<i><b>3 PIN FEMALE PM XLR BLACK "D" TYPE FLANGE</b></i>
<b>AC3FPP</b>	<i><b>3 PIN FEMALE PM XLR, BLACK PLASTIC "P" TYPE FLANGE</b></i>
<b>AC3FPZ</b>	<i><b>3 PIN FEMALE PM XLR, NICKEL "P" TYPE FLANGE</b></i>
<b>AC3FPZB</b>	<i><b>3 PIN FEMALE PM XLR, BLACK "P" TYPE FLANGE</b></i>
<b>AC3M</b>	<i><b>3 PIN MALE CM XLR, NICKEL SHELL, STAMPED CONTACTS</b></i>
<b>AC3MB</b>	<i><b>3 PIN MALE CM XLR, BLACK SHELL, STAMPED CONTACTS</b></i>
<b>AC3MCP</b>	<i><b>3 PIN MALE CM XLR, BLACK PLASTIC SHELL, STAMPED CONTACTS</b></i>
<b>AC3MDP</b>	<i><b>3 PIN MALE PM XLR, PLASTIC</b></i>
<b>AC3MDZ</b>	<i><b>3 PIN MALE PM XLR, NICKEL "D" TYPE FLANGE STAMPED CONTACTS</b></i>
<b>AC3MDZB</b>	<i><b>3 PIN MALE PM XLR, BLACK "D" TYPE FLANGE, STAMPED CONTACTS</b></i>
<b>AC3MM</b>	<i><b>3 PIN MALE CM XLR, NICKEL SHELL MACHINED CONTACTS</b></i>
<b>AC3MMB</b>	<i><b>3 PIN MALE CM XLR, BLACK SHELL, MACHINED CONTACTS</b></i>
<b>AC3MMBAU</b>	<i><b>3 PIN MALE CM XLR, BLACK SHELL/ GOLD MACHINED CONTACTS</b></i>
<b>AC3MMDZ</b>	<i><b>3 PIN MALE PM XLR, NICKEL "D" TYPE FLANGE, MACHINED CONTACTS</b></i>

## BULK CONNECTORS

### AMPHENOL

MODEL	APPLICATIONS
AC3MMPNZ	3 PIN MALE PM XLR, NICKEL "PN" TYPE FLANGE, MACHINED CONTACTS
AC3MPP	3 PIN MALE PM XLR, BLACK PLASTIC "P" TYPE FLANGE
AC4F	4 PIN FEMALE CM XLR NICKEL SHELL
AC4M	4 PIN MALE CM XLR NICKEL SHELL
AC5F	5 PIN FEMALE CM XLR NICKEL SHELL
AC5M	5 PIN MALE CM XLR NICKEL SHELL
AC6AF	6 PIN FEMALE CM XLR NICKEL SHELL
AC6AM	6 PIN MALE CM XLR NICKEL SHELL
AC7F	7 PIN FEMALE CM XLR NICKEL SHELL
AC7M	7 PIN MALE CM XLR NICKEL SHELL
EP-4-11P	4 PIN FEMALE PM EP SERIES NICKEL SHELL, MACHINED CONTACTS
EP-4-12	4 PIN MALE CM EP SERIES NICKEL SHELL
EP-4-13P	4 PIN FEMALE PM EP SERIES, NICKEL SHELL, MACHINED CONTACTS
EP-6-11P	6 PIN FEMALE CM EP SERIES, NICKEL SHELL
EP-6-12	6 PIN MALE CM EP SERIES, NICKEL SHELL
EP-6-13P	6 PIN FEMALE PM EP SERIES, NICKEL SHELL, MACHINED CONTACTS
EP-6-14	6 PIN MALE PM EP SERIES, NICKEL SHELL, MACHINED CONTACTS
EP-8-11P	8 PIN FEMALE CM EP SERIES NICKEL SHELL
EP-8-12	8 PIN MALE CM EP SERIES, NICKEL SHELL
EP-8-13P	8 PIN FEMALE PM EP SERIES, NICKEL SHELL, STAMPED CONTACTS
TM2PJ-AU	¼ 2CON PHONE PLUG, SATIN NICKEL SHELL, GOLD PLATED CONTACTS
TM2PJ	¼ 2CON PHONE PLUG, SATIN NICKEL SHELL, NICKEL PLATED CONTACTS

### G & H

MODEL	APPLICATIONS
BF2P300-NGG	¼ 2CON PHONE PLUG, NICKEL BARREL/GOLD PLUG, .300" ENTRANCE
BF2P300-NNN	¼ 2CON PHONE PLUG, NICKEL BARREL AND PLUG, .300" ENTRANCE
BF2P322-BNN	¼ 2CON PHONE PLUG, BLACK BARREL/ NICKEL PLUG, .322" ENTRANCE
BF2P322-NGG	¼ 2CON PHONE PLUG, NICKEL BARREL/ GOLD PLUG, .322" ENTRANCE
BF2P322-NNN	¼ 2CON PHONE PLUG, NICKEL BARREL AND PLUG, .322" ENTRANCE
BF2P375-BGG	¼ 2CON PHONE PLUG, BLACK BARREL/ GOLD PLUG, .375" ENTRANCE
BF2P375-BNN	¼ 2CON PHONE PLUG, BLACK BARREL/ NICKEL PLUG, .375" ENTRANCE
BF2P375-NGG	¼ 2CON PHONE PLUG, NICKEL BARREL/ GOLD PLUG, .375" ENTRANCE
BF2P375-NNN	¼ 2CON PHONE PLUG, NICKEL BARREL AND PLUG, .375" ENTRANCE
BF2PS-BGG	¼ 2CON SPEAKER PLUG, BLACK BARREL/ GOLD PLUG, .375" ENTRANCE
BF2PS-BNN	¼ 2CON SPEAKER PLUG, BLACK BARREL/ NICKEL PLUG, .375" ENTRANCE
BF2PS-NGG	¼ 2CON SPEAKER PLUG, NICKEL BARREL/ GOLD PLUG, .375" ENTRANCE
BF2PS-NNN	¼ 2CON SPEAKER PLUG, NICKEL BARREL AND PLUG, .375" ENTRANCE
BF3P322-BGGG	¼ 3CON PHONE PLUG, BLACK BARREL/ GOLD PLUG, .322" ENTRANCE
BF3P322-NGGG	¼ 3CON PHONE PLUG, NICKEL BARREL/ GOLD PLUG, .322" ENTRANCE
BF3P322-NNNN	¼ 3CON PHONE PLUG, NICKEL BARREL AND PLUG, .322" ENTRANCE
BF3P375-NNNN	¼ 3CON PHONE PLUG, NICKEL BARREL AND PLUG, .375" ENTRANCE
BFQP322-NNN	¼ 2CON QUIET PHONE PLUG, NICKEL BARREL AND PLUG, .322" ENTRANCE
BFQP322-NGG	¼ 2CON QUIET PHONE PLUG, NICKEL BARREL/ GOLD PLUG, .322" ENTRANCE
BFQP375-NNN	¼ 2CON QUIET PHONE PLUG, NICKEL BARREL AND PLUG, .375" ENTRANCE
BFQP375-NGG	¼ 2CON QUIET PHONE PLUG, NICKEL BARREL/ GOLD PLUG, .375" ENTRANCE
MF2P437-NNN	¼ 2CON JUMBO PHONE PLUG, NICKEL BARREL AND PLUG, .437" ENTRANCE
MF3P437-NNN	¼ 3CON JUMBO PHONE PLUG, NICKEL BARREL AND PLUG, .437" ENTRANCE
RF2P322-NGG	¼ 2CON RIGHT ANGLE PHONE PLUG, NICKEL BARREL/ GOLD PLUG, .322" ENTRANCE
RF2P322-NNN	¼ 2CON RIGHT ANGLE PHONE PLUG, NICKEL BARREL AND PLUG, .322" ENTRANCE
RF2P375-NGG	¼ 2CON RIGHT ANGLE PHONE PLUG, NICKEL BARREL/ GOLD PLUG, .375" ENTRANCE
RF2P375-NNN	¼ 2CON RIGHT ANGLE PHONE PLUG, NICKEL BARREL AND PLUG, .375" ENTRANCE



**MODEL**

**APPLICATIONS**

<b>RF3P322-NGGG</b>	<i>¼ 3CON RIGHT ANGLE PHONE PLUG, NICKEL BARREL/ GOLD PLUG, .322" ENTRANCE</i>
<b>RF3P322-NNNN</b>	<i>¼ 3CON RIGHT ANGLE PHONE PLUG, NICKEL BARREL AND PLUG, .322" ENTRANCE</i>
<b>RF3P375-NGGG</b>	<i>¼ 3CON RIGHT ANGLE PHONE PLUG, NICKEL BARREL/ GOLD PLUG, .375" ENTRANCE</i>
<b>RF3P375-NNNN</b>	<i>¼ 3CON RIGHT ANGLE PHONE PLUG, NICKEL BARREL AND PLUG, .375" ENTRANCE</i>
<b>RFQP322-NNN</b>	<i>¼ 2CON RIGHT ANGLE QUIET PLUG, NICKEL BARREL AND PLUG, .322" ENTRANCE</i>
<b>RFQP375-NNN</b>	<i>¼ 2CON RIGHT ANGLE QUIET PLUG, NICKEL BARREL AND PLUG, .375" ENTRANCE</i>

**IMPORT**

**MODEL**

**APPLICATIONS**

<b>¼ TRSPMF</b>	<i>¼ 3CON PLASTIC PM RECEPTACLE</i>
<b>¼ TRSRACMF</b>	<i>¼ 3CON FLAT RA PHONE PLUG, NICKEL 8.2MM BARREL AND PLUG</i>
<b>¼ TRSCMM</b>	<i>¼ 3CON PHONE PLUG, NICKEL 8.2MM BARREL AND PLUG</i>
<b>¼ TSCMF</b>	<i>¼ 2CON NICKEL CM JACK</i>
<b>¼ TSCMM</b>	<i>¼ 2CON PHONE PLUG, NICKEL 8.2MM BARREL AND PLUG</i>
<b>¼ TSCMMNG</b>	<i>¼ 2CON PHONE PLUG, NICKEL 8.2MM BARREL/ GOLD PLUG</i>
<b>¼ TSCMML</b>	<i>¼ 2CON PHONE PLUG, NICKEL 9.4MM BARREL AND PLUG</i>
<b>¼ TSJCMF</b>	<i>¼ 2CON JUMBO NICKEL PHONE JACK</i>
<b>¼ TSJCMM</b>	<i>¼ 2CON JUMBO PHONE PLUG, NICKEL 13MM BARREL AND PLUG</i>
<b>¼ TSPMF</b>	<i>¼ 2CON NICKEL PM RECEPTACLE</i>
<b>¼ TSPMF</b>	<i>¼ 3CON NICKEL PM RECEPTACLE</i>
<b>¼ TSPMF</b>	<i>¼ 2CON PLASTIC PM RECEPTACLE/ NEW #SI-508-1</i>
<b>¼ TSRACMM</b>	<i>¼ 2CON ROUND RIGHT ANGLE PHONE PLUG, NICKEL 8.2MM BARREL AND PLUG</i>
<b>¼ TSRACMMF</b>	<i>¼ 2CON FLAT RIGHT ANGLE PHONE PLUG, NICKEL BARREL &amp; PLUG "PANCAKE TYPE"</i>
<b>2.5TRSCMM</b>	<i>2.5MM 3CON NICKEL PHONE PLUG</i>
<b>3.5TRSCMM</b>	<i>3.5MM 3CON NICKEL PHONE PLUG</i>
<b>3.5TRSPMF</b>	<i>3.5MM 3CON NICKEL PHONE PLUG</i>
<b>3.5TSCMF</b>	<i>3.5MM 2CON NICKEL PHONE PLUG</i>
<b>3.5TSCMM</b>	<i>3.5MM 3CON NICKEL PHONE PLUG</i>
<b>AA-ADD</b>	<i>AUDIO ADAPTER 3.5MM TRS PLUG TO RCA JACKS</i>
<b>AA-AT</b>	<i>AUDIO ADAPTER 3.5MM TRS PLUG TO ¼ TRS JACK</i>
<b>AA-BS</b>	<i>AUDIO ADAPTER ¼ TRS PLUG TO 3.5MM TRS JACK</i>
<b>AA-CN</b>	<i>AUDIO ADAPTER RCA PLUG TO ¼ TS JACK</i>
<b>AA-DD</b>	<i>AUDIO ADAPTER RCA JACKS</i>
<b>AA-DDP</b>	<i>AUDIO ADAPTER ¼ TS PLUG TO RCA JACKS</i>
<b>AA-DDS</b>	<i>AUDIO ADAPTER ¼ TRS PLUG TO RCA JACKS</i>
<b>AA-DP</b>	<i>AUDIO ADAPTER RCA JACK TO ¼ TS PLUG</i>
<b>AA-DDY</b>	<i>AUDIO ADAPTER RCA JACKS TO 3.5MM TS PLUG</i>
<b>AA-DY</b>	<i>AUDIO ADAPTER 3.5MM TS TO RCA JACK</i>
<b>AA-FF</b>	<i>AUDIO ADAPTER XLRF TO XLRF</i>
<b>AA-FS</b>	<i>AUDIO ADAPTER XLRF TO ¼ TRS PLUG</i>
<b>AA-FT</b>	<i>AUDIO ADAPTER XLRF TO ¼ TRS JACK</i>
<b>AA-FX</b>	<i>AUDIO ADAPTER XLRF TO XLRM</i>
<b>AA-MBPFF-K</b>	<i>AUDIO ADAPTER DOUBLE BANANA JACKS, BLACK</i>
<b>AA-MBPFF-R</b>	<i>AUDIO ADAPTER DOUBLE BANANA JACKS, RED</i>
<b>AA-NN</b>	<i>AUDIO ADAPTER ¼ TS JACKS</i>
<b>AA-NNP</b>	<i>AUDIO ADAPTER ¼ TS PLUG TO ¼ TS JACKS</i>
<b>AA-NY</b>	<i>AUDIO ADAPTER ¼ TS JACK TO 3.5 MM TS PLUG</i>
<b>AA-PP</b>	<i>AUDIO ADAPTER ¼ TS PLUGS</i>
<b>AA-PZ</b>	<i>AUDIO ADAPTER ¼ TS PLUG TO 3.5 MM TS JACK</i>
<b>AA-ST</b>	<i>AUDIO ADAPTER ¼ TRS PLUG TO TRS JACK</i>
<b>AA-SX</b>	<i>AUDIO ADAPTER ¼ TRS PLUG TO XLRM</i>
<b>AA-TX</b>	<i>AUDIO ADAPTER ¼ TRS JACK TO XLRM</i>

## IMPORT

### MODEL

### APPLICATIONS

<b>AA-XX</b>	<i>AUDIO ADAPTER XLRM TO XLRM</i>
<b>MDP-K</b>	<i>BLACK DOUBLE BANANA PLUG</i>
<b>MDP-R</b>	<i>RED DOUBLE BANANA PLUG</i>
<b>MDPL-K</b>	<i>BLACK DOUBLE BANANA PLUG WITH LARGER OPENING</i>
<b>MDPL-R</b>	<i>RED DOUBLE BANANA PLUG WITH LARGER OPENING</i>
<b>MDPG-K</b>	<i>GOLD PLATED DOUBLE BANANA PLUG, BLACK</i>
<b>MDPG-R</b>	<i>GOLD PLATED DOUBLE BANANA PLUG, RED</i>
<b>RCACMF</b>	<i>RCA NICKEL CM JACK</i>
<b>RCACMM305</b>	<i>RCA NICKEL CM PLUG .305 ENTRY</i>
<b>RCACMMNG</b>	<i>RCA BLACK BARREL/ GOLD PLUG</i>
<b>RCARACMM</b>	<i>RCA RIGHT ANGLE NICKEL CM PLUG</i>
<b>RCARACMMLG.K</b>	<i>RCA RIGHT ANGLE GOLD CM PLUG, BLACK STRIPE</i>
<b>RCARACMMLG.R</b>	<i>RCA RIGHT ANGLE GOLD CM PLUG, RED STRIPE</i>
<b>SBPG-K</b>	<i>GOLD SOLDERLESS STACKUP BANANA PLUG, BLACK</i>
<b>SBPG-R</b>	<i>GOLD SOLDERLESS STACKUP BANANA PLUG, RED</i>
<b>XLR3PMM</b>	<i>3 PIN FEMALE NICKEL PM XLR</i>
<b>XLR3CMM</b>	<i>3 PIN MALE NICKEL CM XLR</i>
<b>XLR3CMF</b>	<i>3 PIN FEMALE NICKEL CM XLR</i>

## NEUTRIK

### MODEL

### APPLICATIONS

<b>BSP-R</b>	<i>¼ RED BOOT</i>
<b>BSP-W</b>	<i>¼ WHITE BOOT</i>
<b>BSTP-BL</b>	<i>BLUE NP3TT SLEEVE</i>
<b>BSTP-GRN</b>	<i>GREEN NP355 SLEEVE</i>
<b>BSTP-V</b>	<i>VIOLET NP3TT SLEEVE</i>
<b>BSTP-W</b>	<i>WHITE NP3TT SLEEVE</i>
<b>BSTP-T</b>	<i>YELLOW NP3TT SLEEVE</i>
<b>BSX-R</b>	<i>XLR RED BOOT</i>
<b>BSX-W</b>	<i>XLR WHITE BOOT</i>
<b>NC3FD-L</b>	<i>3 PIN FEMALE PM XLR NICKEL "D" TYPE FLANGE SCREW IN INSERT</i>
<b>NCFD-L-1</b>	<i>3 PIN FEMALE PM XLR NICKEL "D" TYPE FLANGE</i>
<b>NC3FP-1</b>	<i>3 PIN FEMALE PM XLR NICKEL "P" TYPE FLANGE</i>
<b>NC3FP-1-B</b>	<i>3 PIN FEMALE XLR BLACK SHELL/ GOLD CONTACTS "P" TYPE FLANGE</i>
<b>NC3FP-1-BAG</b>	<i>3 PIN FEMALE PM XLR BLACK SHELL/ SILVER CONTACTS "P" TYPE FLANGE</i>
<b>NC3FRC</b>	<i>3 PIN FEMALE CM NICKEL SHELL, RIGHT ANGLE XLR</i>
<b>NC3FRC-BAG</b>	<i>3 PIN FEMALE CM BLACK SHELL/ SILVER CONTACTS, RIGHT ANGLE XLR</i>
<b>NC3FX-B</b>	<i>3 PIN FEMALE CM BLACK SHELL/ GOLD CONTACTS XLR</i>
<b>NC3FX-BAG-D</b>	<i>3 PIN FEMALE CM BLACK SHELL/ SILVER CONTACTS XLR</i>
<b>NC3FX-D</b>	<i>3 PIN FEMALE CM NICKEL SHELL XLR</i>
<b>NC3FX-HD</b>	<i>3 PIN FEMALE CM NEOPRENE NICKEL SHELL/ GOLD CONTACTS XLR</i>
<b>NC3FX-S</b>	<i>3 PIN FEMALE CM NICKEL SHELL XLR ON/OFF SWITCH</i>
<b>NC3FX-S-B</b>	<i>3 PIN FEMALE CM BLACK SHELL/ GOLD CONTACTS XLR ON/OFF SWITCH</i>
<b>NC3MD-L-1</b>	<i>3 PIN MALE PM XLR NICKEL "D" TYPE FLANGE</i>
<b>NC3MP</b>	<i>3 PIN MALE PM XLR NICKEL "P" TYPE FLANGE</i>
<b>NC3MP-B</b>	<i>3 PIN MALE PM XLR BLACK SHELL/ GOLD CONTACTS "P" TYPE FLANGE</i>
<b>NC3MP-BAG</b>	<i>3 PIN MALE PM XLR BLACK SHELL "P" TYPE FLANGE</i>
<b>NC3MPP</b>	<i>3 PIN MALE PM XLR PLASTIC "D" TYPE FLANGE</i>
<b>NC3MRC</b>	<i>3 PIN MALE CM NICKEL SHELL, RIGHT ANGLE XLR</i>
<b>NC3MRC-BAG-D</b>	<i>3 PIN MALE CM BLACK SHELL/ SILVER CONTACTS, RIGHT ANGLE XLR</i>
<b>NC3MX-B</b>	<i>3 PIN MALE CM BLACK SHELL/ GOLD CONTACTS XLR</i>
<b>NC3MX-BAG</b>	<i>3 PIN MALE CM BLACK SHELL/ SILVER CONTACTS XLR</i>
<b>NC3MX-D</b>	<i>3 PIN MALE CM NICKEL SHELL XLR</i>
<b>NCMX-HD</b>	<i>3 PIN MALE CM STAINLESS STEEL SHELL/ GOLD CONTACTS XLR</i>
<b>NC5MX</b>	<i>5 PIN MALE CM NICKEL SHELL XLR</i>



# NEUTRIK

## MODEL

## APPLICATIONS

NC5FX	5 PIN FEMALE CM NICKEL SHELL XLR
NJ10FI-V	3 POLE COMBO PM RECEPTACLE FEM XLR/ ¼" TRS JACK VERT. PCB CONTACTS SWITCH
NCJ5FI-S	3 POLE COMBO PM RECEPTACLE FEM XLR ¼" TRS SOLDER CUPS NON SWITCHING
NJ3FC6	¼ 3 CON CM NICKEL SHELL LOCKING JACK
NJ3FP6C	¼" 3 CON PM NICKEL SHELL LOCKING JACK
NL2FC	2 POLE FEMALE CM SPEAKON
NL2MP	2 POLE MALE PM SPEAKON "D" TYPE FLANGE
NL4FC	4 POLE FEMALE CM SPEAKON
NA4LJ	AUDIO ADAPTER ¼" TS JACK TO 4 PIN SPEAKON
NL4FRX	4 POLE FEMALE CM RIGHT ANGLE SPEAKON
NL4MM	4 POLE CM SPEAKON COUPLER
NL4MP	4 POLE MALE PM SPEAKON "D" TYPE FLANGE
NL4MPR	4 POLE MALE PM SPEAKON ROUND FLANGE
NL8FC	8 POLE FEMALE CM SPEAKON
NL8MM	8 POLE CM SPEAKON COUPLER
NL8MPR	8 POLE MALE PM SPEAKON ROUND FLANGE
NP2C	¼ 2CON CM NICKEL SHELL PHONE PLUG .285" ENTRANCE
NP2C-BAG	¼ 2CON CM BLACK SHELL/ SILVER CONTACT PHONE PLUG
NP2C-T10AA	¼ 2CON CM NICKEL SHELL TRANSFORMER PLUG
NP2RC	¼ 2CON CM NICKEL SHELL RIGHT ANGLE PHONE PLUG
NP3C	¼ 3CON CM NICKEL SHELL PHONE PLUG
NP3C-BAG	¼ 3CON BLACK SHELL/SILVER CONTACTS PHONE PLUG
NP3RC	¼ 3CON CM NICKEL SHELL RIGHT ANGLE PHONE PLUG
NP3RC-BAG	¼ 3CON BLACK SHELL RIGHT ANGLE PHONE PLUG
NP3TB-B	¼ 3CON CM BLACK COATED BRASS SHELL MILITARY GA PHONE PLUG, SILVER CONT.
NP3TB-R	1/3 3CON CM RED COATED BRASS SHELL MILITARY GA. PHONE PLUG SILVER CONT.
NP3TT-2	4.4MM 3CON BLK. PLASTIC SLEEVE SILVER CRIMP CONTACT DUAL BANTAM
NP3TT-P-B	4.4MM 3CON CM BLK. PLASTIC SLEEVE SILVER CRIMP CONTACT BANTAM PH. PLUG
NP3TT-P-R	4.4MM 3CON CM RED PLASTIC SLEEVE SILVER CRIMP CONTACT BANTAM PH. PLUG
NYS220	¼ 2CON PM NICKEL JACK LONG BUSHING FLUSH HEAD
NYS221	¼ 2CON PM NICKEL JACK LONG BUSHING STRAP HEAD
NYS322	5PIN MALE CM NICKEL PLATED DIN. JACK
NYS325	5PIN FEMALE PM NICKEL PLATED DIN. JACK
NYS352	RCA NICKEL PLATED CM PHONO PLUG

# SWITCHCRAFT

## MODEL

## APPLICATIONS

11	¼ 2CON PM NICKEL JACK
121	¼ 2CON CM NICKEL JACK, .266" ENTRANCE
128	¼ 2CON CM NICKEL JUMBO JACK
12A	¼ 2CON PM NICKEL JACK TIP SHUNT
12B	¼ 3CON PM NICKEL JACK
131	¼ 3CON CM NICKEL JACK
151	¼ 2CON PM NICKEL JACK THICK PANEL BUSHING
152B	¼ 3CON PM NICKEL THICK PANEL BUSHING
181	¼ 2CON CM NICKEL SILENT PLUG 250" ENTRANCE
184	¼ 2CON CM NICKEL JUMBO PHONE PLUG .380" ENTRANCE SOLDER
184L	¼ 2CON CM NICKEL JUMBO PHONE PLUG .451" ENTRANCE SOLDER
226	¼ 2CON ROUND RIGHT ANGLE NICKEL PLUG .265" ENTRANCE
236	¼ 3CON ROUND RIGHT ANGLE NICKEL PLUG .265" ENTRANCE
2501F	SCREW ON MIC PLUG .281" ENTRANCE
285L	¼ 2CON CM NICKEL PHONE PLUG .375" ENTRANCE

connectors

**MODEL**

**APPLICATIONS**

<b>297</b>	<i>¼ 3CON CM NICKEL PHONE PLUG .297" ENTRANCE</i>
<b>2P1603 (280)</b>	<i>¼ 2CON CM NICKEL PHONE PLUG .297" ENTRANCE</i>
<b>3501F</b>	<i>RCA 2CON PM NICKEL JACK PHONO JACK PLASTIC FLANGE MOUNTING</i>
<b>3501FR</b>	<i>RCA 2CON PM NICKEL JACK PHONO JACK NUT MOUNTING</i>
<b>3503</b>	<i>RCA 2CON NICKEL JACK .172" ENTRANCE</i>
<b>3502RA</b>	<i>RCA 2CON RA NICKEL SHELL</i>
<b>361A</b>	<i>AUDIO ADAPTER SHIELDED ¼ TS JACKS</i>
<b>57GB5F</b>	<i>5 PIN PM METAL DIN. JACK</i>
<b>70</b>	<i>¼ 2CON CM NICKEL JUMBO PHONE PLUG .380" ENTRANCE, SCREW TERMINALS</i>
<b>A3F</b>	<i>3 PIN FEMALE CM NICKEL SHELL XLR SCREW RETENTION</i>
<b>A3FB</b>	<i>3 PIN FEMALE CM BLACK SHELL XLR SCREW RETENTION</i>
<b>A3FBAU</b>	<i>3 PIN FEMALE CM BLACK SHELL, GOLD CONTACTS, XLR SCREW RETENTION</i>
<b>A3M</b>	<i>3 PIN MALE CM NICKEL SHELL XLR SCREW RETENTION</i>
<b>A3MB</b>	<i>3 PIN MALE CM BLACK SHELL, XLR SCREW RETENTION</i>
<b>A3MBAU</b>	<i>3 PIN MALE CM BLACK SHELL, GOLD CONTACTS, XLR SCREW RETENTION</i>
<b>AA3F</b>	<i>3 PIN FEMALE CM NICKEL SHELL XLR</i>
<b>AA3FB</b>	<i>3 PIN FEMALE CM BLACK SHELL, XLR SCREW RETENTION</i>
<b>AA3M</b>	<i>3 PIN MALE CM NICKEL SHELL XLR</i>
<b>AA3MB</b>	<i>3 PIN MALE CM BLACK SHELL XLR</i>
<b>D3F</b>	<i>3 PIN FEMALE PM NICKEL XLR</i>
<b>D3M</b>	<i>3 PIN MALE PM NICKEL XLR</i>
<b>L11</b>	<i>¼ 2CON PM NICKEL .375" BUSHING JACK</i>
<b>L12A</b>	<i>¼ 2CON PM NICKEL, .375" BUSHING JACK TIP SHUNT</i>
<b>L12B</b>	<i>SWC ¼ 3CON THICK PM PHONE JACK</i>
<b>NL112B</b>	<i>¼ 3CON PM ENCLOSED JACK, .375" BUSHING</i>
<b>T3F</b>	<i>3 PIN FEMALE CM NICKEL SHELL, XLR ON/OFF SWITCH</i>
<b>TA3F</b>	<i>3 PIN MINI FEMALE CM NICKEL SHELL XLR, .115" ENTRANCE</i>
<b>TA3FL</b>	<i>3 PIN MINI FEMALE CM NICKEL SHELL XLR, .170" ENTRANCE</i>
<b>TA3ML</b>	<i>3 PIN MINI MALE CM NICKEL SHELL XLR, .170" ENTRANCE</i>
<b>TA4FL</b>	<i>4 PIIN MINI FEMALE CM NICKEL SHELL XLR, .170" ENTRANCE</i>
<b>Z15J</b>	<i>¼ 2CON PM NICKEL HIGH POWER SPEAKER JACK</i>
<b>91-MC3M</b>	<i>3 PIN SCREW ON, XLR STYLE PLUG</i>
<b>91-MC4M</b>	<i>4 PIN SCREW ON XLR STYLE PLUG</i>

**Contact your Quantum Sales  
Representative  
for pricing and availability.**

**QUANTUM AUDIO DESIGNS, INC.**

**Shipping: #1 Quantum Drive  
Benton, MO 63736**

**Mailing: P.O. Box 130  
Benton, MO 63736**

**Phone: 1.573.545.4404  
Toll Free Phone: 1.888.545.4404  
Fax: 1.573.545.4411**

**Email: [sales@quantumaudiodesigns.com](mailto:sales@quantumaudiodesigns.com)**



## WARRANTY POLICIES

All Quantum Audio Designs instrument, midi, microphone, speaker, and patch cables listed in our standard product catalog are warranted for up to a 10 year period from date of manufacture. All multi-channel audio snakes, multi-tracks, specialty Y and adapter cables, direct and device boxes, and any custom design audio or video cables are warranted for a period of 1 year from date of manufacture.

Although our warranty covers any defects in materials and/or workmanship during the warranty period, we cannot warranty defects or damage caused to the product due to misuse or abuse, or normal wear & tear. Our 10-year warranty coverage is offered only to end-users of our products who have purchased their products from an authorized reseller of Quantum products. To qualify for our 10 year warranty coverage, the purchaser (end-user) is required within 30 days from the purchase date of their Quantum product, to submit to Quantum Audio Designs Inc, 1) a legible copy of their original sales receipt, 2) the original cable sleeve in which their cable product was packaged, and 3) the purchaser's name, mailing address and or physical shipping address if different, daytime telephone contact number, and email address if available. This information will be kept on file for purposes of warranty registration and direct correspondence between our company only, and the end-user of our product. All such information will be used for the purposes of satisfying any warranty claims that might arise, and for conveying to the end-user any advertising offers, product updates or new product offerings that our company may currently have in effect. In the event that the end-user does not register the purchase of their Quantum product with Quantum Audio Designs Inc within 30 days from their date of purchase, the warranty coverage will revert to 1 year from the original date of purchase.

In the event a Quantum product has been purchased by an end-user and is suspected to be defective or malfunctioning, we require that our factory first be contacted in an effort to determine the nature and possible cause of the problem. If our factory representative determines that the product will have to be returned to our factory for service, a RMA# will be issued. This RMA# should be written on the outside of the shipping container and the product should be returned, freight prepaid to our factory for servicing. We ask that a letter explaining the nature of the defect, the return shipping address, the RMA# assigned to your warranty claim, and proof of purchase be included in your shipment. Quantum products deemed within warranty will be repaired, or even possibly replaced if our technicians deem replacement necessary. Once warranty service is completed, warranted products will be shipped to the end-user, freight prepaid via normal common carrier to the return address provided. Any defective product returned by an authorized Quantum reseller which qualify for warranty service will be included with the resellers next product shipment, once warranty servicing is complete.

In the event, a Quantum product has been purchased by one of our authorized dealers and has not yet been sold and is suspected by the dealer to be defective, or has been purchased from the dealer by an end-user and returned to the dealer as defective within 15 days of purchase, we require the dealer to contact their regional service representative to discuss the suspected problem and to determine how the warranty claim will be handled. These types of warranty issues, classified as "New Product Defects" require that the product in question must be in "like new" or "Showroom" condition. Due to the fact that these types of warranty issues are extremely rare, the repair or replacement arrangements made for these products will be made on a case by case basis, with the final determination of any arrangements to be determined by Quantum Audio Designs Inc.





# Quantum Audio Designs

P.O. Box 130

Benton, MO 63736

Toll Free: 888.545.4404

Phone: 573.545.4404

Fax: 573.545.4411

email: [quantum@quantumaudiodesigns.com](mailto:quantum@quantumaudiodesigns.com)

BALANCED  
LOW Z  
OUTPUT

LIFTED  
GROUND  
LIFT  
SELECT

GROUND

**Quantum**  
AUDIO DESIGNS  
**MATCHMAKER**  
MDB-101 DIRECT BOX

LINE  
INPUT  
LEVEL  
SELECT

OFF  
CABINET  
EMULA-  
TION  
ON

INSTRUMENT/  
SPEAKER  
IN THRU SPK.